

Tasmanian Ancestry

Volume 14

No. 2

September, 1993

ISSN
0159-0677

Print Post Approved
PP740017/0027

\$ 5.00

Inc

GENEALOGICAL SOCIETY OF TASMANIA, INC.

PO Box 60, PROSPECT, Tasmania 7250

PATRON

His Excellency General Sir Phillip Bennett, A.C., K.B.E., D.S.O., Governor of Tasmania.

EXECUTIVE

President:	Mrs. D. McNeice	(002) 28 3564
Vice President:	Mrs. D. Collins	(004) 31 1113
Vice President:	Mr. D. Harris	(004) 24 5328
Executive Secretary:	Mrs. C. Read	(002) 44 4527
Executive Treasurer:	Mr. G. Thom	(002) 28 3298

COMMITTEE

Mrs. J. Balmer, Mrs. B. Calverley, Mrs. I. Harris, Mrs P. Harris, Mrs. A. Hay, Mrs. D. Kidd, Mrs. C. Morris, Mrs. M. Rumney, Mrs. I. Schaffer, C. Taylor

JOURNAL EDITOR	Mrs. A. Bartlett	(003) 44 5258
JOURNAL CO-ORDINATOR	Mrs. B. Perkins	(003) 39 1270
LIBRARY CO-ORDINATOR	Mr. M. Lansdell	(002) 23 2226
MEMBERS INTERESTS and AGCI	Mr. A. Wilson	(002) 44 1837
MEMBERSHIP SECRETARY	Mrs. L. Hookway	(004) 33 0767
PUBLIC OFFICER	Mr. J. Wall	(002) 43 6810
RESEARCH CO-ORDINATOR	Mr. J. Dare	(004) 24 7889
SALES & PUBLICATIONS CO-ORDINATOR	Mrs. A. Bartlett	(003) 44 5258
TAMTOT CO-ORDINATOR	Mrs. B. Calverley	(003) 44 5608
VDL HERITAGE INDEX	Mr. N. Chick	(002) 28 2083

BRANCHES OF THE SOCIETY

Burnie:	PO Box 748 BURNIE 7320
Devonport:	PO Box 587, DEVONPORT 7310
Hobart:	GPO Box 640G, HOBART 7001
Huon:	PO Box 117, HUONVILLE 7109
Launceston:	PO Box 1290, LAUNCESTON 7250

TASMANIAN ANCESTRY

Vol 14 No 2

Sept 1993

ISSN 0159-0677

Editorial Panel - Anne Bartlett, Jenny Gill, Jo Keen, Maureen Martin, Bet Wood
Postal Address:- PO Box 60 PROSPECT, Tasmania 7250

Contents

Editorial.....	62
President's Message.....	63
President's Annual Report.....	64
By-laws, Guide-lines and Duty Statements.....	67
Branch Boundaries.....	68
1994 Family History Award.....	69
Interest Group Reports.....	70
Branch News.....	71
Library Notes.....	74
Tasmaniana Library Acquisitions.....	77
Grey's Cordials, Anne Bartlett.....	80
Upholstery and Furniture Warehouse, Liverpool Street, Hobart, Joan M. Graney.....	86
Cartoon.....	88
Holroyd's Jam Tin Manufactory.....	89
A Common Complaint, Bob Wellington.....	91
William Cox, The Premier Aerated Water Co., Edward F. Cox.....	92
Waiting for a Reply to that Letter, Leonie Carpenter.....	93
Winduss's Farm, Janette Winduss.....	94
First AIF Service Records.....	95
Another First Fleeter's Headstone Found, Thelma McKay.....	96
From the Exchange Journals, Thelma McKay.....	98
Down County Museum.....	100
Gleanings.....	101
Family Reunions.....	107
Coming Events.....	107
New Releases.....	108
Book Reviews.....	110
Society.....	114

The opinions expressed in this Journal are not necessarily those of the editorial panel nor of the Genealogical Society of Tasmania Inc. The Society cannot vouch for the accuracy of offers of services or goods that appear in the Journal, or be responsible for the outcome of any contract entered into with an advertiser. The Contents of *Tasmanian Ancestry* are subject to the provisions of the Copyright Act and may not be reproduced without written permission of the Editor.

DEADLINE DATES:- 7 January, 7 April, 7 July, 7 October

EDITORIAL

The Journal Editorial Committee has received a number of inquiries concerning how members know whether articles they have written for the journal have been accepted, particularly as they do not always appear in the issue after they have been submitted. The committee tries to publish original articles as soon as possible but we cannot guarantee to publish them in the first issue after they are received as we need to achieve a balance in each issue. We may be working on two or three issues of the journal at the one time and some articles could be held back in order to achieve a balance of topics covered in each issue. Hence an article could be used months after it has been received. However should an original article be rejected for any reason the article is returned to the author with a letter explaining why. So, if your article does not appear as soon as you expect it should, don't give up. It will appear in an issue.

This procedure only applies to articles written by the person submitting them. The committee also receives copies of material which has been published in other sources such as newspapers, magazines, other journals, etc. To reproduce this material usually requires the written permission of the author and/or publisher. The committee will seek this if it considers the material to be of great interest to a majority of the members.

We receive a large number of queries to published in the journal. In order to be fair to all members the policy Journal Editorial Committee is to publish members' queries in the same order in which they are received, with only one query per member per issue. Your queries are not always published in the first issue after they are received; however the first query in any letter will always be published by the second issue after receipt.

The New Members' Interests section is compiled from the names listed on the application form when someone joins the Society. Some members have expressed disappointment that not all new members list what names they are researching. There can be several reasons why there may none listed with the name of the member. Often when someone joins the Society, they do not have sufficient information to complete this section of the membership form. Remember we were all raw beginners once. In other cases they do not have the information with them when they actually fill the form out. I have known of cases where a third party pays the subscription for a person as a gift and hence is unable to give the required information.

Anne Bartlett

Editor

Launceston Branch Library will be moving to 2 Taylor Street, Invermay during September. The library will be closed for about 10 days during this process. If travelling to Launceston phone (003) 44 5258 to check whether the Library will be open.

Anne Bartlett

PRESIDENT'S MESSAGE

The Annual General Meeting held over the weekend of 19th and 20th June and hosted by the Huon Branch was well attended and enjoyed by all.

The Society was honoured by the attendance of Mr Tony Sachell, winner of the 1993 Family History Award, who graciously flew in from Melbourne to accept the award for his book titled *Linked by Chains and Lineage*. For those members who were unable to attend this enjoyable weekend minutes and reports have been circulated to all Branches.

Upon a recommendation from the State Executive, members attending the Annual General Meeting voted not to change the Name of Society. Also, as listed on the agenda, a vote to alter Rule 10(e) was taken and details of this alteration has been published in this journal.

After a long debate by Branches and the State Executive, a decision to alter the journal cover has been finally made. We can expect to see the new cover on the December 1993 issue.

In February 1992 the Society endorsed a new set of rules which were published in the June 1992 journal. Since then By-Laws and Guide-lines, including Duty Statements, to be used with the Rules have been continually written and endorsed by the State Executive. Any interested member should contact their local branch where a full set should be available for viewing.

The 1992 Members' Interest book has now been published. It was compiled from names submitted during the current membership year only. Members can submit up to six names each year when submitting their renewal. This listing has been compiled by Allen Wilson, and any queries should be sent to him via the Hobart Branch.

As we were only able to obtain one set of AGCI (Australian Genealogical Computer Index) fiche, it has been decided that these will be circulated with the St. Catherine's House records (1868-1878) currently housed by Devonport Branch. The AGCI microfiche is a consolidated index of indices supplied by participating Societies. It is hoped that the TAMIOT records shall be incorporated into the next release of microfiche.

Denise McNeice

President, GST Inc.

PRESIDENT'S ANNUAL REPORT

19th June 1993

1992/93 has been a full, constructive and eventful year.

The State has purchased the Index to the St. Catherine's House Records for the years 1868-1922 which has been divided into eleven year batches to be circulated on a rotation system around the Branches. The introduction of new Rules last year opened the way for work on By-Laws, Guide-lines and Duty Statements; whilst these are in no way complete their production is well overdue and they will most certainly be beneficial towards the future running of our Society. The introduction of a Family History Week was well received by branches and shall now be an Annual event for our Society. We are hoping that it may become a National event.

Burnie Branch reports that after visiting members at Queenstown during the year a Queenstown Family History Group under the umbrella of their branch was formed. The branch purchased a computer during the year and at present the library inventory lists and parts of their newspaper indexes are being placed on it. With the introduction of a newsletter during December and extended library opening hours during January Burnie branch should be pleased with the efforts their members have made.

Devonport Branch report a pot pourrie of activities by the members over the past year. These include the hosting of the 1992 Annual General Meeting, displays at Devonport High School, Lyons Library and the Agricultural Show, numerous fund raising events and the ongoing visits to Ulverstone History Room, Launceston State and Genealogical Libraries, Huonville and Burnie Branches and Sheffield Museum.

Hobart Branch - A display at the Hobart Show coupled with Open Days by the branch library during the year proved to create a great deal of interest. A newly formed English research group, together with the continual computerising of indexes have kept this branch extremely busy.

Huon Branch - Although being The smallest branch, Huon has continued to participate in the day to day events of the Society. The introduction of having a guest speaker every other month seems to be working well for them. The branch continues to produce a newsletter for members, items in the Huon News and the Society's journal.

Launceston Branch - This branch has been extremely busy upholding the aims of the society by conducting Adult Education classes, visitations from outside groups to their library and the ongoing assistance by members at the Launceston State Library. Talks to outside groups, assisting the LDS with computer work, indexing of newspapers, an excursion to Beaconsfield and a Carboot sale together with producing the journal and the running of the Family History Award on behalf of the State has indeed kept this branch busy.

Computers - Four branches now have their own computers and are using them for various projects.

Due to the massive work being undertaken by our TAMIOT Co-ordinator a Computer Hard Disc drive has been purchased specifically for the working on and storage of these records.

Exchange Journals - During the year the State Executive appointed Thelma McKay to the position of Exchange Journal Co-ordinator and extended the duties to be undertaken by this Co-ordinator. Thelma is now responsible for the despatching of requested journals to the various branches on inter-library loan. The Society has also introduced in the Journal a section of items extracted from exchange journals which is compiled by Thelma. With the exchange of over one hundred journals this alone is a massive task. Added to this massive task Thelma has undertaken to extract items from *Tasmanian Ancestry* for inclusion in the Federation of Family History Societies (UK) journal *Family History News & Digest*. I would like to thank Thelma for undertaking these various new tasks.

Family History Award - After successfully conducting the 1992 Family History Award Devonport Branch drafted By-laws under which future Awards will be administered and of which Launceston Branch have already felt the benefits. Launceston Branch conducted the 1993 award for a published book; seven entries were received with the winner being Mr Tony Satchell for his book *Linked by Chains and Lineage*. Launceston Branch have also graciously agreed to conduct the 1994 Family History Award for a "Home Produced Book". Entries for this award close on 31st December 1993.

Finances - A full and comprehensive report on finances shall be provided by our Treasurer, Grahame Thom.

Journal - The production of our journal by members of the Launceston branch has continued to run smoothly this year with the aid of the computer purchased in 1992. A new design for the Journal cover was the subject of much debate with a new design being decided and is expected to appear for the first time in December 1993.

To Anne Bartlett and her band of workers we thank you for your work in producing the Journal and to Bev Perkins and her group thank you for the expedient way you have despatched the journal. Also I would like to thank Lyn Hookway, the membership secretary, who provides the address labels for despatching and for keeping the membership records.

Libraries - Again reports from State Co-ordinator, Mr Morris Lansdell, during the year have been full and comprehensive due to the co-operation he receives from all other Branch Librarians. Morris continues to circulate branches with information and material that may be of interest to them. The Society thanks Morris and all branch librarians for their continual hard work.

Members' Interests - Allen Wilson has continued to computerise GST members' interests, which have again been published and is available for purchase. Members interests are compiled from surnames listed on renewal and new members application forms received in the current membership year only. Previous years' entries do not appear in subsequent years. Members need to submit each year the names they wish

included. Therefore it is recommended that you not only check this years interest lists but those of previous years.

Publications and Sales - While ongoing sales of items produced by the Society have been steady, three additional items have been published by the State. These are the Supplementary Congress Papers, Volume 3 of the VDL Heritage and Members' Interests 1991 [also just published Members' Interests 1992]. Stock of The Tasmanian Sources Book, compiled by Anne Bartlett, has been completely exhausted and work on a second edition is underway.

Research - John Dare has continued to provide reports to the executive through-out the year. The Executive hopes members are taking advantage of the introduction of quarterly lists of names being researched by branch research officers and circulated to all branches by John. At the end of the year John compiled a full list of all surnames for which inquiries were made during the year and circulated the list to branches. These lists are very informative and helpful to members. To John and fellow branch research officers, thank you for your untiring work.

TAMIOT - Betty Calverley reports that there is still very little communication between the branches. Due to concerns raised by Betty last year, she has undertaken to update the records, sorting them back into their Municipality, Town and named area. This has now been completed and shall hopefully ease the burden of checking to be undertaken by branches. Many hours have been spent by Betty in transforming these records into a computer format for ease of use by all; thank you Betty.

VDL Heritage - VDL Heritage Volume 3 was finally printed with a change in format and is now available for purchase at a cost of \$16.00. Material for volume 4 is still being prepared by Neil Chick and his three fellow workers with the hope that Volume 4 will go to press before the end of the year.

Van Diemen's Land & Norfolk Island Interest Group - This group has continued to grow with the membership now at 135. General Meetings of the group have been held at Risdon Cove and three excursions were undertaken during the year, with the production of a booklet covering each tour. Various members of this group have also been encourage to produce stories on subjects of interest. These have been produced by the group and made available for purchase. During the year this group made a donation of a selection of these books to all branches.

In closing I would like to say thank you to all those members who have continued to support their branches and the State Executive. To the members of the State Executive and State Co-ordinators I thank you for your ongoing support and to Colleen, my State Secretary, once again I would like to extend to you my personal vote of thanks for the untiring work and assistance given over the last year. Your friendship, loyalty, dedication and support has been greatly appreciated and has not gone unnoticed.

BY-LAWS, GUIDE-LINES AND DUTY STATEMENTS

The following By-Laws, Guide-lines and Duty Statements have been endorsed by the state executive and should be available for viewing at all Branch libraries

GST Inc. Rules endorsed February 1992 (printed in June 1992 Journal)

By-Laws - endorsed May 1992

- Formation of the Society
- Administration
- Nominations for Executive Positions
- Branch Delegates
- Meetings
- Presiding Officer
- Voting, Polls and Ballots
- Questions Arising
- Sub- Committees
- Standard Royalties Agreement
- Family History Award
- Formation of New Branches
- Journal Editorial Committee
- Loan Fund - Control and Administer

Position Procedure Guide-lines endorsed:

- State President
- State Secretary
- Branch Delegates & Alternate Delegates
- State Projects & Publications Co-ordinator
- State Library Co-Ordinator
- State Exchange Journal Co-Ordinator
- State Treasurer

Guide-lines for works published under GST Inc. Name

- Gift Acknowledgement form
- Projects and Publications reporting form
- Abbreviations
- New Members information Sheet
- Guide-lines for Journal

BRANCH BOUNDARIES

For administrative purposes membership is allocated to particular Branches based on geographic boundaries. Members who live outside Tasmania are considered to be State members rather than be allocated to a particular Branch.

Until recently the boundaries have been based on Local Government areas. This has proved difficult to administer and with recent changes to Local Government areas the opportunity was taken to introduce boundaries based on post codes. The State Executive approved the following structure on 15 May 1993.

Hobart Branch	7000 to 7500 and 7120 to 7199 excluding Longley, Kaoota and Pelverata in 7150.
Huon Branch	7100 to 7119 and Longley, Kaoota and Pelverata in 7150.
Launceston Branch	7200 to 7199 excluding 7256 (King Island), and 7300 to 7303.
Devonport Branch	7304 to 7315.
Burnie Branch	7256, 7316 to 7331 and 7466 to 7470.

Members may attend libraries and meetings in any Branch at any time. Based on the old boundaries, the distribution of members for 1992/93 was:-

Burnie Branch	145
Devonport Branch	103
Hobart Branch	486
Huon Branch	40
Launceston Branch	309
Overseas/interstate	278
	<hr/>
	1361

The new boundaries should make little difference to the above distribution.

AMENDMENT TO RULE 10(e)

Rule 10 (e) now reads:-

The Society may grant at the Annual General Meeting, a Fellowship or a Certificate of Meritorious Service in accordance with the By-Laws of the Society.

1994 FAMILY HISTORY AWARD

Entries are now being received for the Genealogical Society of Tasmania Inc. Family History Award for 1994. Entries close on 31st December 1993.

The award for 1994 is to be made for the category "A Home Produce Book" which, for the purposes of the award, is a work that has been typed or produced as a computer print-out that has been reproduced for sale by photocopying or a like process. The competition is open to the general public as well as to members of the Society and authors can submit more than one entry.

Entries for the award must contain a significant Tasmanian content and they must be the story of a family, not an individual person. Entries need not have been written during this calendar year as this is the first time the award has been made for this category.

Entry forms are available from all Branch libraries or by mail from PO Box 1290, Launceston, Tasmania 7250. The winner and presentation of the award will be made at the State Annual General Meeting to be held in Launceston in June 1994.

English Ancestors

Carefully traced in all counties by expert and
experienced genealogists.

We are as much at ease with 13th and 16th century
records as with 19th century ones

Less expensive than competitors.

Write to:
OAKTREE,
28 Nottingham Place
LONDON W1M 3FD
England

or phone/fax
(+44) 71 924 9697
(24hr answering)

INTEREST GROUP REPORTS

Van Diemen's Land - Norfolk Island

The group has continued to grow; membership is now 137. We have added some new members from New Zealand and England as well as local and interstate. Everybody seems to still enjoy the activities and hopefully I won't run out of things to do or places to go for the next couple of years.

The July excursion was to the Theatre Royal and the Criminal Court in Campbell Street, Hobart. The group prefers not to go too far afield during the winter and as the Hobart excursion last year was so popular it was decided to visit another part of Hobart.

The tour of the Theatre can be of interest even to those that have already visited it. The Criminal Court was something different as there was a re-enactment of a trial in the main court followed by a tour. Lunch was served in the second court. I had not been to see this most interesting building before and I was surprised that more is not known about what it has to offer. Maybe the history of the building, while going back to the early 1830's, continued to be used as court until 1961, and because of this does not seem to lend itself to early Tasmania. Believe me it does! The small dark cells under the chapel are just like Port Arthur, and are quite spooky.

The next excursion on 31st October will be from Jericho, where we left off in the March excursion, and continue on to Ross.

I am anxious to arrange excursions to both Launceston and the Channel. This maybe possible in the coming year.

Our booklets have surpassed even my most highest expectations, and members of the group have contributed some very excellent lists and stories, in the last few months.

18	Mistress of "Pleasant Banks" Mrs Elizabeth Gibson.	\$4.50
19	Unnamed Irish Boys on convict ships 1841-1843.	\$3.50
20	Dog owners 1830.	\$4.50

Three other books also written by our members are as follows.

"Trade Wind" Voyage 1858, diary of William Fordham.

Children in Queen Orphanage Hobart Town 1828-1863.

The "Baroosa" 1841-41 or the Tailor's Tale.

Books and list are available from: Irene Schaffer 23a Montagu Street, New Town, Tasmania 7008. Phone (002) 28 7815

Irene Schaffer, Co-ordinator.

BRANCH NEWS

BURNIE

President	Vernice Dudman	(004) 31 1378
Secretary	Diane Kidd	(004) 35 7349
Address	PO Box 748, BURNIE, Tasmania 7320	

DEVONPORT

President	David Harris	(004) 24 5328
Secretary	Isobel Harris	(004) 24 5328
Address	PO Box 587 DEVONPORT, Tasmania 7310	

After many months of fund raising and with the help of some generous donations, the possibility of being able to purchase a new photocopier has become a reality. The photocopier is available for use in the Branch Library and will be operated by the Library Staff.

Members are checking the transcriptions of the Latrobe Cemetery. As this cemetery was transcribed about ten years ago there are many additional entries to be made.

Several members attended the Annual General Meeting and associated social activities at Huonville. The weekend was enjoyed by all.

HOBART

President	Jim Wall	(002) 43 6810
Secretary	Anne Hay	(002) 44 2984
Address	GPO Box 640G, HOBART, Tasmania 7001	

This year the Branch plans to hold a GENERAL MEETING on the 7 December at which the speaker will be Ettie PULLMAN from Victoria. Ettie will speak about the recent developments in the up-dating of the Public Record Office holdings in Victoria. The venue for this meeting will appear in the December issue of the *Tasmanian Ancestry*.

The speakers and subjects for the remaining General Meetings for this year will be:

- 21 September "The Bellerive Historical Society" by Jill ROBERTSON
- 19 October "Old Pubs of Hobart Town" by David BRYCE
- 16 November "My Earliest Known Ancestor" by all members attending

Once again the Branch plans to have an Exhibit at the Royal Hobart Show late in October and the Executive would appreciate the assistance of any members who can help in preparing the displays or staffing the exhibit.

The WHITTON pre-1900 Indexes to Births Deaths & Marriages published in the Hobart *Mercury* are now available in book form (see advertisement elsewhere in this journal). The Computer Group, which meets at our Library on the fourth Wednesday of

the month, at 7pm, is now planning to work on the O'SHEA Indexes which will extend the *Mercury* BDMs up to about 1927.

The English Research Interest Group will be holding meetings at 2pm on Sunday 14 November 1993 and Sunday 13 February 1994, at our Hobart Branch Library. New members are welcome.

I am happy to report that our Librarian has received a number of offers of assistance to staff the library.

Jim Wall, President

HUON

President	Betty Fletcher	(002) 64 1546
Secretary	Enid Woolley	(002) 66 0263
Address	PO Box 117, HUONVILLE, Tasmania 7109	

On the 19th June the Huon Branch hosted the Society's AGM with about fifty members present. Members met at 10 am with some visiting the Apple Museum and others the Motor Museum. Lunch was held in the Ranelagh hall. That evening forty attended the dinner at the Grand Hotel. The next day members drove to the Esperance Heritage Centre and lunch at the Port Huon Holiday Village. As the Huon Branch is the smallest branch with about twenty members we had a busy weekend.

The Branch was formed in 1984 with eleven members. At least four are still active. Enid Woolley was President, Betty Fletcher, Secretary and Elaine Burton Treasurer. The Branch is growing in numbers, but we find that as we get new members others drop out. Members are happy to help anyone who is interested in their family history and the library is open each Saturday from 2-4 pm and on the first Wednesday in the month from 12.30 to 2.30 pm.

LAUNCESTON

President	Anne Bartlett	(003) 44 5258
Secretary	Thelma Grunnell	(003) 31 2145
Address	PO Box 1290, LAUNCESTON, Tas 7250	

Members were treated to a fascinating talk on the History of Evandale by Di Sullivan, from the Evandale Historical and Tourism Centre. The Magnificent Failure - the history of the aborted Evandale to Launceston water scheme formed a portion of her material. The citizens of Launceston refused to pay a water rate because those of Hobart and New Norfolk received their water free!

An exceptionally large attendance of both members and visitors at the July meeting was gratifying for Judy Hollingsworth and Marion Sargent members of the Reference and Local History Room staff at the Launceston Reference Library. Judy and Marion gave a conducted tour and explanation of the newly sited facilities of the first floor of the library. The newspaper archive, manuscript collection, Edwardian and Victorian

collections were also included in the itinerary and those attending were able to delve into material not normally available to general access.

Preparations for the Cottage Garden stall are in full swing. With J.G. washing dozens of plant pots ready for cuttings, the Phenyl deluged drains of the Grunnell household must be the cleanest in Launceston. Alma Ranson has bulbs and alpines coming on well and Mary Greenwood's herbs are enduring the colder weather stoically.

The newsletter recently distributed to members gives notice of forthcoming events and heralds the start of a "Donate a Fiche" scheme to supplement library purchases.

Library roster keeper, Jenny Gill, is always ready to hear from members who would be willing to give some time for this task. "Rookies" will be given a grand tour and paired with an experienced worker. All members are urged to take a hand in this important job as we must maintain the library service. Please don't leave this task to the same few volunteers.

A laundry basket has been purchased ready to receive donations for the Christmas grocery hamper part of the raffle.

Fundraising chocolate selling has been a great success; thanks to members who participated.

Program

- 5th October Virginia Greenhill on Westbury
- 2nd November Noel Shaw, judge of 1993 FH Award "What I look for when judging a Family history".
- 28th November Bus tour of places around Launceston with Convict connections, conducted by Dan Huon of the Launceston Historical Society. The tour commences at 1.30 pm. Members are invited to bring a friend. Further details available at branch meetings.
- 7th December Christmas party evening. Further details in December journal.



BRITISH ISLES DIRECTORIES

1811 - 1923

Now available on Microfiche
Separate fiche for every English County

PLUS · SCOTLAND · IRELAND & WALES

FOR DETAILS send long SAE to NICK VINE HALL, 386 Ferriss Street,
Ailbitt Park, 3206, Australia - TEL. 03/699 9546 FAX 03/699 2362



LIBRARY NOTES

St. Catherine's House Index Roster

	22/8/93-19/11/93	21/11/93-20/2/94	20/2/94-22/5/94
1868-1878	Devonport	Burnie	Huon
1879-1889	Launceston	Devonport	Burnie
1890-1900	Hobart	Launceston	Devonport
1901-1911	Burnie	Huon	Hobart
1912-1922	Huon	Hobart	Launceston

DEVONPORT

We have not had many purchases over the past couple of months as we have been saving up to buy a photo-copier, but our accessions include the following:

Microfiche:

Tasmania 1803-1820 The People and Their Families.
Surnames of the United Kingdom.

Printed Material:

Two Thousand Yesterdays - a Social History of the Kentish Municipality.
Standing Committee on Social Issues - Report 5
WHITTON'S Index to Mercury Birth Notices 1858-1899
WHITTON'S Index to Mercury Death Notices 1858-1899
WHITTON'S Index to Mercury Marriage Notices 1858-1899.

HOBART

Dewey Decimal Classification

The Hobart Branch Library is classified by the Dewey Decimal system.

This system was chosen for several reasons when the library was established in 1981. It is used in public and school libraries in Tasmania and elsewhere, so the general public has already been exposed to it. It's flexible and it's not difficult to understand. The reader only has to match up what appears on the entry in the catalogue with books on shelves.

In Hobart it's a user-friendly card catalogue in which entries are arranged under headings of author, title and subject so that if you know the author or title of a book or the name of a subject you want, you look under those headings. The same principle applies to catalogues presented in other ways e.g. on microfiche.

Every book has a call number which appears in the top left-hand corner of the card e.g. the number stands for the classification of the subject matter of the book. The three letters are the first three letters of the author's name and they act as a filing device on the shelves. In this case, the book is *Life in Old Van Diemen's Land* by Joan Goodrick

and it comes on the shelf before *The History of Tasmania* by John West at but after books of the same classification whose authors' names begin with letters before G in the alphabet.

Numbers used in Dewey range from 000 to 999 and are further broken down to indicate all sorts of subjects sub-dividing the main number decimally. The class 900-999 covers all aspects of history; world history is 900, Australian history is 994, Tasmanian history is 994.6 which is further subdivided to indicate history of different areas of Tasmania. Genealogy at 929 is subdivided in a similar way.

The call number on the catalogue card is repeated on the spine of the book unless this is too narrow or unsuitable for any other reason. The books stand on the shelves in order of call numbers. If they are large the books have a Q for quarto size or F for folio size (larger than quarto) above the call number. Outsize volumes usually stand where more space is available, often under the normal-sized shelving or perhaps elsewhere in the room.

The ready reference books (biographical dictionaries, gazetteers, atlases, Genealogical Research Directories, and the like) have a R prefixing their call numbers. The whole library is a reference library in the sense that books and periodicals are not available for loan, but many of the titles will be found in the various branches of the State Library from which they may be borrowed.

If you cannot find what you want, ask the staff. That's what they are there for. And when you have found it and taken it from the shelf, do them a favour by placing in the space vacated by the book one of the markers provided to show that something has been removed and this is where it should be replaced.

Theo Sharples

LAUNCESTON

English Census directories on microfiche:

Lincolnshire	1830	Northamptonshire	1830	Hampshire	1867
Dorset	1867	Wiltshire	1867	Gloucestershire	1914
Isle of Wight	1875	London	1850	Gloucestershire	1902
Somerset	1923	Warwickshire (NW)	1823	Staffordshire (SE)	1823
Worcestershire (N)	1823	Isle of Wight	1867	Hampshire	1873
Wiltshire	1875	Dorset	1875		

Maureen Martin, Keith Parish and Meryl Yost, all members of the Launceston Branch, have been very busy producing indexes to Tasmanian church baptism and marriage registers. The Launceston Branch library now holds indexes to the following records:

Marriages

Avoca	Anglican	1896-1963
Beaconsfield	Methodist	1881-1931
Beaconsfield	Primitive Methodist	1881-1905
Campbell Town	Anglican	1896-1958

Campbell Town District	Presbyterian	1896-1942
Campbell Town District Circuit	Methodist	1841-1944
Derby	Anglican	1906-1941
Derby District Circuit	Methodist	1911-1925
Exeter-Rosevears Circuit	Methodist	1915-1916
Glamorgan District	Presbyterian	1850-1922 (incomplete)
Hobart	Presbyterian	1896-1916
Hobart Chalmers	Presbyterian	1901-1930
Launceston-Invermay District Circuit	Methodist	1902-1930
Lefroy (Underwood Circuit)	Methodist	1887-1899
Ringarooma	Methodist	1904-1941
St. Marys	Anglican	1896-1963
St. Marys-Ross District	Catholic	1896-1902
St. Marys-St. Helens District Circuit	Methodist	1871-1941
Scottsdale-Ringarooma District	Methodist	1878-1949
Scottsdale-Ringarooma District	Presbyterian	1903-1915
Sorell	Presbyterian	1899-1918

Baptisms

Beaconsfield	Methodist	1915-1934
Exeter-Rosevears Circuit	Methodist	1914-1937
George Town	Methodist	1921-1947
Lefroy (Underwood Circuit)	Methodist	1899-1900
St. Helens	Methodist	1892-1916
St. Marys District Circuit	Methodist	1871-1885
Swansea	Presbyterian	1919-1928 (incomplete)

HUON

The Branch has recently received the index on microfiche to Victorian births, deaths and marriages and is awaiting delivery of the NSW Index. The consolidated index to Tasmanian births, deaths and marriages pre-1900 is expected in August.

Members' Resources

Philip Dennis writes that he has received from the UK the "Hampshire Allegations for marriage Licenses 1689-1837" on microfiche. He also has other fiche plus census books for several parishes in England, etc. He expects others in the society have similar sources of information and these could be used by all members. Anyone who would like Philip to check the marriage allegations for them has only to drop a line to him at 4 Nevin Street, Rossarden 7213, with a saec. He suggests that we print a list of what sources of reference members have. If other members are willing to offer a similar service, the journal committee would be happy to publish the details.

TASMANIANA LIBRARY

STATE LIBRARY OF TASMANIA

NEW ACQUISITIONS

This is a select list of books on history and genealogy which have been acquired by the Tasmaniana Library between mid-January and early April, 1993.

The list has been kept as brief as possible; normally only author, title and the Tasmaniana Library's reference number are given. If you would like further information about any of the books listed, please contact the Tasmaniana Library at 91 Murrain Street, Hobart 7000 (telephone (002) 33 7474, fax (002) 33 7902).

Please note that while all of these books are available for reference in the Tasmaniana Library, they are not available for loan (although some of them may be available in city and branch libraries).

* These volumes are held in the Launceston Reference and Local Studies Library. However the reference number may vary; check with staff or in the catalogue.

Jan Bassett, *The Oxford illustrated dictionary of Australian history*. (TL 994.003 BAS)

Geoffrey Blainey, *The peaks of Lyell*. (Updated edition) (TL 622.09946 BLA)

Coast radio calling: a pictorial history of the first thirty-five years of the Coastal Radio Service, 1912-1947. Part 1: The Australian mainland. Part 2: Australia's islands and territories. (TLPQ 384.53 MIL)

*Brian Chamberlain, *Wooden rails to Bangor: that little known Tasmanian slate tramway which linked Bangor to the Tamar River*. (TLPQ 622.354 CHA)

*Grace Cochrane, *The crafts movement in Australia: a history*. (TLR 745.0994 COC)

*David Collet and David Travalia, *Dixon's Kingdom conservation plan*. (TLPQ 363.69 COL)

The Corrie family in Tasmania. (TLQ 929.2 COR)

*G.W. Cox, *A hand on the helm: the life and times of George Weymouth Cox, 1909-1992*. (TL 994.604092 COX)

Valerie Date, *"Castles in the sky": a biography of the family of Dr Edward Luttrell, 1756-1824, colonial surgeon of Van Diemen's Land, 1816-1821*. (TLQ 929.2 LUT)

Ray Denney, *The long way home*. (TL 940.547252092 DEN)

*M.L. Eddie, *The Eddie family in Australia 1825-1991*. (TL 929.2 EDD)

Wilma Emmett, *William Abbott Emmett (1823-1915) & family: the descendants of William Abbott Emmett & Mary Neale*. (TLQ 929.2 EMM)

- *Jon Faine, *Taken on oath: a generation of lawyers*. (Includes Tasmanians Joseph Dixon and Charles Page.) (TL 340.092 FAI)
- Diane B. Flood, *The Flood family in Australia 1793-1991*. (TL 929.2 FLO)
- *Julie Gardham, *Peppermint Bay: a history of the Woodbridge area from settlement to the 1967 bushfires*. (TL 994.652 GAR)
- *Colin Harvey, *Family history: Some descendants and relatives of James and Anna-Maria Harvey*. (TLQ 929.2 HAR)
- History of emergency events, Tasmania*, issue 1, July 1990. (TLR 363.349946 HIS)
- Brian Howes, *Guide to fine and rare Australasian books*, volume three. (TLQ 011.44 HOW)
- Audrey Hudspeth with Kathryn Evans, *Drysdale Hospitality College, Hobart: archival investigation*. (TLQ 727.3 HUD)
- Jorgen Jorgenson's fiery breeches displayed in Hobart Town by Mr Henry Melville, MDCCCXXXII*. (TL 920 JOR)
- Diane Langmore, *Prime Ministers' wives: the public and private lives of ten Australian women*. (Includes Dame Enid Lyons.) (TL 994.00992 LAN)
- *Cath Lott, *The Cooper family in Australia*. (TLP 929.2 COO)
- *Stephen Martin, *A new land: European perceptions of Australia, 1788-1850*. (TL 994.02 MAR)
- Gary O'Hagan, *The jewel beyond the seas: the life and times of Elizabeth Needham, 1762-1825*. (TLPQ 920 NEE)
- Organ Historical Trust of Tasmania, *The 19th century sound preserved: Tasmania's historic pipe organs*. (TLP 786.5 ORG)
- The pioneer islanders: a tribute to the first fleeters and the settlers from the first Norfolk Island settlement to Van Diemen's Land 1804-1820*. (TLPQ 929.394 PIO)
- Joyce Purtscher, *Children in Queen's Orphanage, Hobart Town, 1828-1863*. (TLPQ 929.3 PUR)
- Joyce Purtscher, *Infants at Queen's Orphanage, Hobart, 1851-1863*. (TLPQ 929.3 PUR)
- *Michael Ross and Alex Graeme-Evans, *A short history guide to Port Arthur*. (TLR 365.9946 ROS)
- Susan Seyfried, *The story of the Lovett family and their journey to an island at the bottom of the world*. (TLQ 929.2 LOV)
- *K.R. von Stieglitz, *A history of Evandale*. (Revised edition, with index.) (TL 994.622 VON)
- Don & Eva Styles, *The Styles family tree, descending from Richard Styles (1818-1993)*. (TLQ 929.3 STY)

Geoffrey M. Swainson, *William Swainson F.R.S., F.L.S., naturalist and artist: family letters & diaries: final destination New Zealand.* (TLQ 591.092 SWA)

*James Backhouse Walker, *Walk to the west.* (TLQ 796.51 WAL)

Ken Ward-Harvey, *The sappers' war: with Ninth Australian Division Engineers, 1939-1945.* (TLQ 940.541 WAR)

*Reg. A. Watson, *The scandalous adventures of Captain Frederick Wentworth Watson.* (TLP 968.0488 WAT)

Reg A. Watson, *Thompson: the last man to be hung in Tasmania: a report on the murder of Evelyn Maughan, Hobart.* (TLPQ 364.1523 THO)

David W. Wilson, *A list of wrecks sinkings and rescues on the south and west coast of Tasmania 1939-1992.* (TLR 910.45 WIL)

Reg Wright, *The Youngs of Rokeby and their friends.* (TL 929.2 YOU)

HISTORICAL RESEARCH ASSOCIATES

*Have you traced your ancestors to Ireland? If so Joan and Jennifer will be pleased to help you continue your research. For a personal, professional and prompt service write to: Joan Phillipson B.A. (Hons), Jennifer Irwin B.A. (Hons), Glen Cottage, Glenmachan Road Belfast BT38 2NP, N. Ireland or 7 Lancasterian Street, Carrickfergus, BT38 7AB, Co. Antrim N.
Please enclose \$10 for preliminary evaluation.*

QUEENSLAND HISTORICAL RESEARCH

Undertaken promptly and at reasonable fees.
full family history or one off enquiries
For further information & enquiries

Riverside Genealogical Research Service

P.O. Box 99 Pleystowe QLD 4741
(Phone 079 59 2521)

GREY'S CORDIALS

Anne Bartlett

Today the soft drink market is dominated by two multi-national companies, each with a limited range of flavours. This situation has come about in the last forty years. For the first half of the present century, each town had its cordial factory with its own brand and range of flavours. These factories were run as family businesses and their products engendered considerable loyalty from the local population.

In the early years the bottles were specially moulded for each factory and some bore heavily embossed trademarks. At the turn of the century the bottles were sealed by a glass marble imprisoned in the neck. To open the bottle one pushed down the marble with a pencil or stick. Later the much cheaper crown seal took over. These early bottles with trade marks now command prices of a hundred dollars or more each.

This is the story of one such family concern.

Three generations of the Grey family manufactured cordial at Smithton for a period of over fifty years. The business, initially known as *C.B. Grey Aerated Waters & Cordial Factory* and using the pelican as its trade mark, was begun by Cornelius Burns Grey at the turn of the century. At about this time, his wife was running the Temperance Hotel in Smithton¹. The first factory was situated in the lane off Smith Street, behind the old office of *The Chronicle*². The original bottles which had glass marble seals are now collectors items. In times gone by many were smashed by children for the glass marbles. The only one I have is cracked.

Cornelius, or Con as he was known as, was the second son of Stephen and Mary (nee Burns) Grey. He was born at Byefield farm, Forest, on 29th August 1843³. At that time his father was one of the many tenant farmers of the Van Diemen's Land Company⁴. At some time after the death of his father, Con had gone to Melbourne where he worked as a labourer and while there he met Johannah Ryan, an Irish girl. They were married on October 17th 1874 at Moor Street, Fitzroy according to the rites of the Victorian Free Church. At that time they were both living in Nicholson Street, Fitzroy⁵. In about 1878 Con, with his wife Hannah and their two sons, Albert and Stephen, returned to Tasmania where they were to spend the remainder of their lives. Their two daughters, Ellen (1878, Table Cape) and Alice (1881, Montagu) were born in Tasmania. Ellen died in 1902 from a snake bite⁶.

When he died in 1911, Con willed all his belongings, apart from the block of land he left his son Albert, to his daughter Alice for her own use and benefit. In the list of assets attached to his will is recorded a soda water plant valued at £20.

Alice had been stricken with polio in her early twenties and was a cripple for the remainder of her life. She lived with her brother Stephen and owned considerable property in Smithton but according to one of her nephews she gradually sold it all in order to finance treatments offered by "quacks" who promised to cure her of her



Cornelius Grey



Albert Grey



Stephen Grey



Albert J. Grey



Percy Grey

disability. In 1913 Alice advertised for sale an "Aerated Water Plant, in first class order".

Presumably her brother Stephen bought it as when he enlisted in the Army in May 1916 and left for France his older brother Albert took over the factory from him¹. It is possible that Stephen was operating the plant for Alice prior to her advertising it for sale. Alice moved to Melbourne after Stephen enlisted where she worked for a number of years before returning to Tasmania. She died at Launceston in 1939 and is buried at Carr Villa. Stephen died of wounds in France on 17 April 1918 and is buried in the Ebbingham Military Cemetery².

In June 1916 Albert, or Bert as he was known, Grey advertised that he had disposed of his carrying business as he intended to devote all of his time to the cordial business³. The business soon expanded. Shortly after he took control Bert built a new and much larger factory on the block of land he owned on the corner of Smith and Goldie Streets. In November 1916 he travelled to Melbourne where he purchased an up-to-date plant for the making of cordials at a cost of £100⁴. New bottles with his name on them were obtained; these still had marble seals and are now more valuable than those with Con's name on them. The name of the firm was changed to *A.E. Grey Aerated Waters & Cordial Factory*.

The water used for the cordial came from a spring located on land owned by the family at the foot of Tier Hill, between Smith and King Streets. The water was piped from the spring and fed into a large holding tank at the factory. Following Bert's death in 1951, the land was donated to the Council and it now forms a part of Anzac Park⁵.

By July 1918 Bert was advertising that "*He desires to notify the Public of Circular Head that, with the installation of new and up-to-date machinery, he is now prepared to supply CORDIALS in any quantity to any part of the district. Only the best class of Fruit Essences, etc. are used.*"⁶

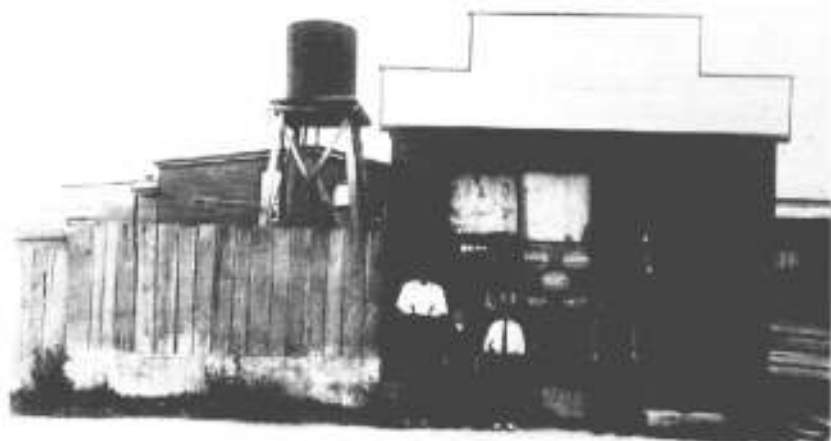
At this time deliveries were made by a four wheeled horse-drawn cart, travelling over many of the roads Con and his two sons, Steve and Bert, had constructed for the Horton Road Trust. In December 1916 the horses took fright while standing at Tierney's Corner, Forest and took off a great speed along the Back Line Road. They managed to avoid disaster and the cart, loaded with bottles, arrived home with only a bent axle⁷. However in December 1920 in a similar occurrence while on the way to Rogerton, one horse was severely injured and had to be destroyed⁸.

A month earlier Bert had applied for permission to build a garage⁹ and advertised a waggon and horses, complete with harness, for sale¹⁰. He had taken on the agency for Plume Mobiloil and from then on a truck was used to deliver the cordials. Bert kept his recipes in a small notebook which he jealously guarded from everybody. After my mother's death, I found this amongst my father's papers and I still have it.

During the depression years of the 1930s Bert's eldest son, also called Albert and known as "Young Bert" to distinguish him from his father, entered the business after he had been retrenched from his job in a bank. Following World War II Bert's second son, Percy also worked in the factory and the name was changed to *A.E. Grey & Sons*. By



An old delivery truck.



Second factory - mid 1920's.



Some of Grey's cordial bottles.

now the factory was too small to cope with the demand and Bert's third son, Len, designed and built a new factory next to the old one. At the same time a mechanised bottle washing plant and other machinery were installed.

This factory remained in the family until the late 1950s. A series of factors came together which brought about the downfall of the business. Following Bert's death in 1951, death duties and the consequences of his will resulted in financial difficulties. At about the same time Cooe Cordials began competing vigorously for business in the Circular Head area and introduced small seven fluid ounce bottles which proved very popular. Grey's had to buy a new stock of bottles to remain competitive. Coca Cola was then introduced and began its inroads into the market. To top it all off, Bert and several members of his family were involved in a serious car accident in 1961. He was unable to work again and the business was sold.

The new proprietors continued to use the name *Greys Cordials* for several years. Eventually the factory closed and the plant was sold to a firm in Launceston who continued to use the bottles for home delivered cordial for a number of years.

The trade mark of the pelican standing on one foot was probably inspired by the many pelicans which frequented the Duck River and numerous male members of the family were dubbed Pel, Pelly or Pelican in honour of it. One still bears the nickname.

Young Bert was my father and I grew up in and around the factory. There was always a plentiful supply of cordial in our home. The factory was a playground to my two brothers, my sister and myself. We played hide and seek amongst the stacks of crates and used the soda water syphons as water pistols, much to my dad's dismay. They each took several minutes to fill and we could empty them in seconds. We had a plentiful supply of sugar bags for use in making tents, hammocks, costumes, etc.

Being children of the cordial manufacturer however brought special problems. All the shop keepers knew who we were so we could not cash in our plentiful supply of Grey's bottles for lollies. Sometimes we were befriended by other children because we could offer them cordial to drink and we learnt to be wary of the motives of some.

The family had a truck for the business and could not afford a car as well. Consequently all family trips were made in the truck. My sister and I had to ride in the cab with my parents while my two brothers were allowed to ride on the tray. The once a year trip to Burnie over narrow winding gravel roads was torture in the truck and I was invariably car-sick.

All the small family cordial businesses have disappeared along with their unique ranges of flavours. The giant Coca Cola and Pepsi Cola brands have swept all the little firms aside. Personally I find their flavours bland and uninteresting; not nearly as palatable as ours.

References

1. *North West Advocate*, 12 December 1901
2. *The Chronicle*, 16 May 1951
3. Family Bible

4. VDL Company Records VDL 68
5. Marriage Certificate
6. Family Bible
7. Will of Cornelius Grey
8. *The Chronicle*, 26 November 1913
9. *Ibid.*, 16 May 1951
10. D.J. Davies, *The Greys of Circular Head*, Canberra 1991, p.31
11. *The Chronicle*, 14 June 1916
12. *Ibid.*, 22 November 1916
13. *Ibid.*, 8 February 1989
14. *Ibid.*, 17 July 1918
15. Davies, 1991, *op cit*, p. 30
16. *The Chronicle*, 22 December 1920
17. *Ibid.*, 17 November 1920
18. *Ibid.*, 3 November 1920

VALE

Burnie's most knowledgeable historian, Mr. Wilfred Gerrard Winter, died on 5th August 1993 at Burnie. He was born at Burnie in 1916, the second son of Mr. and Mrs. E.A. Winter, founders of the photographic firm, Winter's Studio. After retiring in 1971, Mr. Winter revived a lifelong interest in the history of the Burnie district. He was always willing to assist other local historians and his help is acknowledged in almost every book related to Burnie's early history. Articles written by Mr. Winter appeared in the June 1993 journal.

British Research

Birth certificates to full family trees!

Edward J. Lowe MA CGRS
40, Heathfield Rd., Bromley, Kent BR1 3RN, England
Tel.: 0011-4481-313-9806

Council Member, Association of Genealogists & Record Agents,
England's only organization of professional genealogists.
Personal cheques welcome in Australian currency.

UPHOLSTERY AND FURNITURE WAREHOUSE

LIVERPOOL STREET, HOBART.

Joan M. Graney

James Whitesides (c1803-1890) was one of a party of 30 artisans brought out from Ireland by Thomas Martin Fenton, for each of whom he was paid 20 pounds per head. They travelled in the ship *Lyndseys*, leaving Sligo on 26th November 1831 and sailing via Greenock (where a new bottom was fitted to the ship) and Rio de Janeiro arriving in Hobart, Van Diemens Land on 24th June 1832.

James set up in business as a Cabinet Maker and Upholsterer in Argyle Street in association with two fellow passengers, William Hamilton and John McLoughlan. Ultimately they separated and each started business on his own account. Their paths continued to cross and the *Colonial Times* 13th January 1853 announced that James Whitesides and William Hamilton had entered into partnership at premises occupied by Whitesides in Liverpool Street. There was no further mention of Hamilton but in 1859 James Whitesides' eldest son, Thomas, became a partner of the firm then known as James Whitesides and Son.

The three storey building still stands in Liverpool Street between Websters and the Alabama Hotel. It ran back a depth of 260 feet to the Hobart Rivulet and now the Wellington or Bank Arcade runs right through the middle of it. The Show Room and Workshops were on the ground floor and the family lived above.

In 1835 James Whitesides married Alicia Jane Beaugarde, sister of Mrs William Hamilton, and there were nine children, four girls and five boys. The three eldest sons, Thomas, William and James Joseph all went into the family business and of the two younger, John Charles went into an accounting firm in Melbourne and Edward Joshua Cooper into the Commercial Bank of Tasmania. Despite there being four grandsons, the name has died out and the business closed.

Charles Beaugarde Whitesides, son of Edward, joined the firm as an apprentice in 1896, when an engineering career was denied him on account of deafness. He worked up to become Chief Cabinet Maker at 1/- per hour. There was plenty of Huon Pine at 4d per foot, and 1/4" boards were used for the bottoms of drawers and backs of furniture. Charles was not happy with the unprogressive ways of his uncles and in 1910 left the firm to go and plant an apple orchard in the Huon valley. He used his cabinet making skills in making furniture, building houses and boats when money was short and his grandson Martin James Beaugarde Graney has inherited those Cabinet Making skills.

My father Charles told me 4 things about his grandfather:

1. He came out from Ireland because there was too much fighting.

2. He had seen him take out a chair and smash it because the workmanship was not up to standard.
3. He was reputed to have the ability to go into the forest and assess exactly what he could make from a particular tree.
4. Once a year he used to get a large shipment of goods from England in the sailing ship *Ethel* and it was a grand sight to see her come up the river under full sail and in favourable weather come alongside without tug assistance, and it was great fun unpacking the goods.

In 1851 at the Great Exhibition in London James Whitesides received a bronze medal for a collection of Tasmanian Ornamental Woods which included blackwood, myrtle and musk. The firm received five gold medals at the International Exhibition in Hobart, 1894-95. Their furniture took up five large bays in the building. The *Mercury* of May 13th 1895 described their drawing, dining, bedroom, library and office furniture as:

the workmanship is all first class and material of the best quality. The best timber both in blackwood and Huon Pine has been selected for the work and shows the endeavours of the firm in every direction to excel in all goods exhibited by them.

In 1868 they were appointed as Cabinet Makers to H.R.H. the Duke of Edinburgh, following his visit to Tasmania in that year. A description of James Whitesides' most important commission appeared in the *Hobart Town Daily Courier* 14th November 1856:

Colonial Workmanship - The New Armchair - we have had the pleasure of inspecting at the establishment of the Ministerial Upholsterer, Mr Whitesides in Liverpool Street, the State Chair, now in the course of completion for the accommodation of His Excellency, at the Opening Prorogation, or Dissolution of the Parliament of Tasmania and we have great satisfaction in pronouncing it to be the best specimen of colonial workmanship ever turned out in the colony

In reply to a query, Mrs Malcolm Fraser wrote on 18th July 1980:

We do have a chair which is in Kirribilli House signed by your great grandfather. It is cedar, upholstered in black leather with brass castors and retains it's original patina and style of upholstery. We are very lucky to have such an original example of his work.

Furniture made by Whitesides and Son are now sought after items and can be identified by an oval stamp "J. WHITESIDES AND SON, FURNITURE MANUFACTURERS." - usually in some obscure spot!

Sources:

Cyclopaedia of Tasmania

Hobart Mercury

Hobart Town Daily Courier

Family Records.

19th Century Australian Furniture by Kevin Fahey, Claudia Simpson and Andrew Simpson



HOLROYD'S JAM TIN MANUFACTORY

The *Mercury*, Wednesday Morning, January 15, 1873

Before completing our account of the different establishments in Hobart Town devoted to the making of jam and the preserving of fruits, we will give a description of Mr. Holroyd's jam tin manufactory, situated at the top of Argyle-street, not far from the Brickfields Invalid Depot. Mr. Holroyd has been engaged in this business for seven years, and of course this industry has extended as the jam making trade increased in extent. The premises in which Mr. Holroyd carried on his business have an unpretentious exterior, but inside the place is a regular hive of industry, the continued noise of the men and boys at work being quite bewildering to one not used to it.

The tin used in the manufactory is known as "Cyrmo tin," and is imported by Mr. Holroyd direct from England, and sometimes from Victoria. The first operation is to cut the square sheets of tin into strips of the size required for making the bodies, tops, and bottoms of the jam tins. This is done by placing the sheets on a table provided with shears, and the table is so constructed that the width of the strips of tin cut can be easily regulated. In another part of the premises the strips are cut into the requisite lengths by a guillotine knife.

Those pieces that are meant for bodies are then bent into a cylindrical form by being passed through a little machine provided with three rollers, and the boy who works this machine by hand, turns out the bodies with great swiftness. When this has been done, the bodies are ready for the solderers hands. Different rollers are used for making the bodies of different sized tins. There are seven screw presses of different sizes, for stamping the circular pieces used for tops and bottoms out of the strips of tin, and the stamps, which are of great power, will cut through a great many sheets of tin at one stroke. Then there are other stamping machines which put an edge to the tops and bottoms. This process finishes the bottoms, which are then ready to be affixed to the bodies, but the tops are not yet completed.

Another machine stamps a small piece varying in size with the size of the tin intended to be made from the tops which are then stamped again in order that a groove or depression may be made around the hole that has been stamped so that when the completed tin is full of jam the small piece of tin forming the cover may be the more easily soldered down. The pieces stamped out to form the hole in the tops of the tins all come in to form covers for the tins that are a size smaller but of course for the largest size, the covers have to be made. These covers are sent out with the tins to be soldered on after they are filled with jam.

We have now described the various processes employed in making the jam tins before they go to the solderers hands. When the bodies go into the soldering room they are fitted on an iron block the exact size of the tin to be made and are kept there by a brass cap which holds the edges firmly together until they are soldered. There are four of these blocks always in use. The bottoms are then fitted on the bodies and then the tins

are passed through a set of rollers which fix the bottoms on tightly before they are soldered. There are four of these rolling machines. The tops with the circular hole in the centre are then soldered on and if the tin is a perfect one it is ready to go out after it has been washed and polished. Before the tins are put in the cases, they are all carefully inspected and any that have any defects, through dents or imperfect soldering are sent back. Two boys are kept constantly at work repairing the rejected tins.

Mr. Holroyd make jam tins that will hold one and two pounds, preserved fruit tins that will hold three pounds and tins of various sizes for preserved fish. In connection with the establishment there is a blacksmith's shop, in which there is a lathe, and all the other common appliances, and here all the tools used in the manufactory are repaired. A look into one of the stores would give some idea of the extent of the business carried on. There are piles of cases filled with sheets of tin ready for use, immense ingots of tin and lead for smelting for solder, and large jars of muriatic acid, a chemical that the solderers use in their work. Then there are large circular cakes of solder, all ready for use in the manufactory.

Jam tin making is not the only industry carried on at this establishment. Mr. Holroyd also makes cases for the jam manufacturers, and to cut the sawn timber for the end, and the split stuff used for the sides of the cases, to the required lengths, there is a circular saw driven by a three horsepower spider engine. The engine was made by Mr. Clark of the New Wharf, and is driven by a multitubular boiler by the same maker. The circular saw is fixed in a sliding bench, and there is every facility for getting the work done well and quickly.

The wood used in making the cases is stringy bark, and it is all well seasoned, and is generally kept stacked on the premises for a considerable time. The cases appear to be well and strongly made, and look as if they would stand a good deal of knocking about. Mr. Holroyd had made 15,000 cases this season, and has sent them out with five dozen tins in each case. He expects to send out about 4,000 more, so that at the close of the season he will probably have made 19,000 cases, containing one million one hundred and forty thousand jam tins. Mr. Holroyd states that he could, with his present appliances, make twenty thousand cases, each containing five dozen tins, in one season, or twenty thousand cases, and one million two hundred thousand tins. The most work ever done in one day at the manufactory was the making of 168 cases, and 10,080 tins.

Mr. Holroyd informs us that he used two tons of ingot tin this season, to mix with the lead in making solder. This tin is imported from England and Victoria, and the lead is bought in Hobart Town. The muriatic acid is imported from England, and this season six cases, of six gallons each, have been used. The quantity of sheet tin used is very large, and this season, from the 17th. of July to the 18th. of January Mr. Holroyd informs us that he has used 1,569 cases of sheet tin, each case containing one hundredweight. The jam makers supplied with tins from this establishment are Johnson Brothers, and Mr. Wilson, of Hobart Town, Mr. Hawkins, of Shipwright's Point, Huon and Mr. Cane of Franklin. There are altogether eighty-two men and boys employed on the premises, and of this number twenty two are engaged in soldering. By far the larger

number of the employees are boys, a fact that shows the value of local industries of this kind in giving employment to lads, who would no doubt otherwise be running about the streets and getting into mischief.



Keith Johnston writes that Benjamin Holroyd arrived in Hobart from London in 1854 with his wife Mary and their older children. He was originally from Halifax in Yorkshire. Benjamin was a trained whitesmith (working the "white" metals tin, lead, zinc etc.) and had worked at the Government Arsenal at Woolwich, London, immediately before migrating to Van Diemen's Land.

The business described in the above article had only been operating seven years, so it can be seen how much it had grown since its inception. It might well have become a major industry or at least a large part of the IXL empire if Benjamin had not died, at the age of 54, in 1874. I have often wondered if his early death may have been brought on by the large amounts of lead that he was handling.

The Holroyds lived at 350 Argyle Street, Hobart. The house still exists under the mistaken name of "Holyrood House" and I have reason to believe that the factory was situated behind it.

A Common Complaint

Bob Wellington

They were wed we were wont to exclaim,
but to prove it is such a tough game
when Eric, the cleric,
being so esoteric
refuses to use a surname

The vicar united each pair,
but obviously did not care
as long as the fee
was acceptable, he
proceeded to pocket his share.

This poses our problem today,
for how are we able to say,
if even to any,
just which of the many
the same name, do we relate, pray?

WILLIAM COX

THE PREMIER AERATED WATER CO.

Edward F. Cox

William Cox was born in Hobart in 1846 and came to live in Launceston with his parents and three brothers in 1860.

The first record of William working was when he signed on as crew member of the brig *Syren* in 1866. He then joined the firm of W. Hart & Sons of Charles and York Streets, where he worked for fifty years.

One of William's brothers was James Cox who died of smallpox in 1903. In that year there was a smallpox epidemic in Launceston and nineteen people died. The town was placed in a state of virtual siege for five months. James was buried in a grave in the Quarantine Station off Quarantine Road. A headstone was erected on James' grave; it can still be found. A fence has been erected around the grave and a roof has been added to protect it for the elements.

William married Margaret Hughes. They had three sons and one daughter; they were William Henry, Charles John, Albert Tasman and Eva Lavinia Lillian May. William won 600 pounds in the lottery; a lot of money in those days. It is believed this money was used in the starting of the business "Premier Aerated Water Co.". The factory commenced production of cordial in 1912 and was listed in Business Directories until 1929. It was originally situated in Canal Street behind the C. H. Smith & Co. building, not far from the Scott and Griffiths Brewery building.

The cordial factory was run by William's three sons. The eldest son, William Jnr., delivered the cordial, by horse and cart, to various businesses and hotels around town. Like the milkman's horse, which got to know the milk-run, so did William's horse get to know its way around town. It was stabled behind the house of William Snr. in Earl Street. This land is now part of the site occupied by the Great Northern Hotel.

Albert, William's third son, made the cordial which was mostly lemonade, sarsaparilla, ginger beer, hop beer etc. Charles John, or Jack as he was commonly called, was a carpenter by trade and made the crates for the bottles.

The bottles used were the glass bottles with the glass marbles inside to seal them. Also used were stone-ware bottles for the ginger beer. The bottles are now quite scarce and, a few years ago, were fetching about \$75.00 for the glass kind and over \$100.00 for the stoneware ones. The initials on the bottles; C.B.S. stand for Cox Bros. & Smith, the Smith being Charles H. Smith who married Alice Maud Cox, William's niece. As far as is known he was not related to the C.H. Smith who owned the building.

William's three sons were all prominent footballers. Jack played for City and North Launceston, being in North's 1901 Premiership team and the Intrastate Northern team in 1905. William Jnr. also played for North Launceston and also Launceston. Albert was also a well-known footballer at that time.

William died in 1924 and is buried in a large grave, along with his wife Margaret, who died in 1911, and Eva Lillian May, who died in 1923. The grave is situated in the Carr Villa Cemetery in Launceston. His three sons, the partners in the Premier Aerated Water Company, died between 1947 and 1949.

WAITING FOR A REPLY TO THAT LETTER

Leonie Carpenter

How many times have we written a letter and then eagerly waited for the reply? So many times the reply takes an eternity to arrive or doesn't come at all.

Recently my reply did come; but after twelve years!

Not so strange perhaps, but I cannot even remember writing to the man who lives at Kallangur, Queensland. Yes I do keep copies of my correspondence, but twelve years ago my filing system was not as thorough as now. Or what is more likely, after about twelve months without a reply, I have probably thrown my copy of the letter out in a clean-up to make more space in my folders.

Interestingly, the gentleman wrote as if there is no likelihood that I might have moved house, lost interest in genealogy or even died in the meantime. His reply is written as if he had only recently received my letter.

Apparently when I wrote on 15 October 1980 I requested copies of some photos. In his reply dated 27 October 1992, he said that he hopes to have some copied and will send them on to me "as we are all getting a bit long in the tooth and I suppose there is some urgency required here".

He continues "You enclosed a stamped addressed envelope with your letter and by this time I note that our postage has more than doubled in the past 12 years, but then I recollect when the postage was 1 penny and we were all shocked when by the time I was 12 years old it was 2 pence so the inflation rate was comparative then."

The stamp I sent in 1980 probably has more philatelic value than postage value.

It is now February, four months later, and the promised photos still have not arrived. I just hope that if they are forthcoming that they won't take another twelve years, because if the man can remember when postage was 1 penny I don't like my chances of him still being about in another twelve years.

Don't lose hope of receiving a reply to that long sent letter, as it might take twelve years.

WINDUSS'S FARM

Janette Winduss

Topographic Map 8115-31 situated on the Leven River on the North West Coast of Tasmania, Winduss's Farm, Gunn's Plains has been in the Family for sixty years.

Here is a little history to share with you.

The Farm, consisting of about 196 acres, was purchased by W.L. Winduss from J. Johnston in 1932. It was mainly bush, limestone caves and some river flats. Wesley and his wife, Ellinor, cleared the land while also carving a living for themselves and their nine children.

Wesley turned his hand to whatever was available to bring in a living, setting rabbit traps, breeding goats and binding and thrashing crops. But the love of his later life was to breed Clydesdale horses. He loved to work with horses and this showed as he became a regular exhibitor at the local Agricultural Shows. Today the ribbons from these placings are prized by family members.

As time went by Wesley slowly, but surely, bought and cleared more land, until he was the proud owner of about 400 acres. Wesley spent the greater part of his life on this farm, milking cows and mixed farming. In their retiring years, Wesley and Ellinor sold the farm to their second son and moved to live at Ulverstone.

It was in 1967 that this son and his wife started out just as his father Wesley had years before. Many changes took place over the six years that they spent on this land. Times were hard but still not as hard as the years before them.

Flooding had always been a problem on some of the farm land. The government had been asked to investigate the possibility of overcoming this but to this day the river remains the same, untouched, and the flooding continues. In 1967 a saw mill was established. This mill, called the "Leven Saw Mill", was located at the bottom end of the farm near the Leven River. Logs were cut from the bushland which still exists.

Milking cows, cropping and mixed farming were the means by which this family also existed. Only two children, both girls, were born of this marriage. In 1973 the farm again changed hands, but this time not to a family member. A small section was retained by another son of Wesley's, and this has been kept for private use.

In 1975 the farm was once again back in the family, bought by a grandson of Wesley's. The purchase was of the Homestead Acreage, which has taken on a whole new look. The development of "Wing's Farm Park" also incorporated a caravan site and barbeque area. This new venture has become well known and very popular.

So, if Wesley and Ellinor were with us today I am sure that they would realise that all their "blood, sweat and tears" over their lifetime had been all worth while. Thank you Wesley and Ellinor for leaving us all with a "vision".

FIRST AIF SERVICE RECORDS

The Australian Archives advises that the service records of some 420,000 members of the First Australian Imperial Force are currently being transferred to their repository at Mitchell, ACT. It is expected that some 2.4 shelf kilometres of records will have been moved from Melbourne to Canberra by the end of August.

An operation on this scale will inevitably cause some disruption to services. It will also be necessary to train new reference staff to handle the expected level of inquiries.

It is hoped that new inquiries can be dealt with from 1 January 1994. Members of the public are asked to lodge requests for information from First AIF personnel records after that date. Advice about what information to include in these requests will be published as widely as possible once final arrangements are in place.

Public access to the First AIF records will be in accordance with Australian Archives' normal procedures as set out in the Archives Act. Inquirers will have the choice of purchasing photocopies of records of interest to them or (subject to adequate notice) inspecting copies of the records at the Archives' Mitchell Search Room. Medical documents will not be released and medical information will also be withheld if the subject or his widow is still alive.

The Soldier Career Management Agency (SCMA) will continue to handle inquiries about medals and about information contained in the records. Inquiries about those who served in the Second World War and more recent campaigns should continue to be addressed to the Soldier Career Management Agency (SCMA), GPO Box 393 D, Melbourne, Victoria 3004.

The University of NSW's Department of History at the Australian Defence Force Academy has developed a computer database of information on members of the First AIF. Details for over 333,000 men and women who served overseas as members of the Australian Imperial Force have been entered on to the database.

The database can gain access to information about a digger's service history, past occupation, next of kin, when he/she left Australian and when or if they returned. Copies of entries may now be purchased if sufficient information can be provided to identify the subject of the inquiry. Information retrieval costs are \$10 or \$20 for a framable "certificate", depending on what is wanted or available. For further information about this computer database please write direct to AIF Project, Department of History, University College, Australian Defence Force Academy, Northcott Drive, Campbell, ACT 2601.

ANOTHER FIRST FLEETER'S HEADSTONE FOUND

Thelma McKay

A dedication service was held on the 7th March 1993 at the grave of First Fleet convict, Elizabeth Fitzgerald, at Christ Church, Longford. This is the eleventh memorial plaque to be placed on a headstone in Tasmania by the Fellowship of the First Fleeters from NSW. The Rector of Christ Church, the Reverend Kelvin Viney, gave permission for the plaque to be placed on the headstone which was originally to be relocated from where I had found it, being used as a stepping stone into the Memorial Wall, but this was decided against and a small fence is to be placed around it instead.

Several GST members travelled from Hobart for the occasion. Roy Peck, the convener for the Fellowship in Tasmania and many others gathered around as Pat Harris, President of the Launceston Branch, unveiled the plaque. Pat mentioned that this cemetery had been the first to be transcribed by the Launceston Branch many years ago. Rev. Viney said a prayer of dedication and I spoke of Elizabeth Wilkinson, nee Fitzgerald's life.

Elizabeth Fitzgerald has been one of those mysterious people to research. Using different surnames, she appeared in the records at Norfolk Island, NSW and finally VDL. It was only when I found records of one of her twin daughters, Susannah Mitchell, having her children baptised at St. John's Church in Launceston and using the name Mitchell formerly Fitzgerald that I was sure that I had the right person.

I had first noticed the grave of Elizabeth Wilkinson just twelve months ago while on an excursion to Longford with the Norfolk Island-Van Diemen's Land Interest Group. After visiting Christ Church, we went into the cemetery and as we were about to enter the area where the older headstones have been re-erected, I noticed that the step was in fact a headstone and the name Elizabeth Wilkinson was just readable. It was then that I realised it could be the headstone of a First Fleet convict by the name of Elizabeth Fitzgerald whose name I had come across recently while checking early muster records.

Elizabeth Fitzgerald, who was born in 1760, was recorded as a 26 year old widow when tried in December 1786 for stealing a cotton gown from a London shop. She was sentenced to seven years transportation to New South Wales.

Arriving at Port Jackson with the First Fleet on the *Lady Penrhyn*, Elizabeth remained in NSW for two years before being then sent to Norfolk Island in March 1790 on board the *Sirius*. Twin girls were born on the Island in 1791 to Elizabeth Fitzgerald and a First Fleet Marine by the name of William Mitchell. They returned to Port Jackson with their daughters, Mary and Susannah, in 1793.

The NSW muster for 1806 records Elizabeth Fitzgerald living with a Thomas Wright (William Mitchell having returned to England) and she had three illegitimate daughters. These girls were the twins and Sarah Jane Wright who had been born in 1798, the father being Thomas Wright.

The next mention of Elizabeth, who by now was using the name Mitchell, was her marriage at Launceston in 1814 to Henry Wilkinson. Henry had been tried at York in 1803 and received a fourteen year sentence. He arrived in Sydney on the *Fortune* in 1806 and later that year he was sent on the *Sophia* to VDL.

A very informative list, found at the Archives Office of Tasmania, of women living at Norfolk Plains in 1823, records Elizabeth Fitzgerald arriving in VDL on the *Porpoise* in 1809 and her youngest daughter, Sarah Wright as, being born in Sydney and arriving here on the *Brothers* in 1816.

Of Elizabeth's life here in Tasmania we know only that she would have lived with her husband, Henry, on his fifty acre farm at Norfolk Plains where she died on the 20th August 1832, aged seventy two years. She was buried in a large tomb and it is interesting to see that in 1883, fifty years later, a reporter for the *Mercury* noted that "the tomb of Elizabeth Wilkinson in Christ Church, Longford, who died in 1832, was a plain four square brick tomb with a large heavy stone slab and it looked at least 150 years old and was falling over even then".

I do not know when, or even where, Elizabeth's husband, Henry Wilkinson died but of her three daughters:

Susannah Mitchell married John McAllister in 1814. They had three children, Sarah, William and Margaret, between 1811 and 1815 but after this no further record of their whereabouts has been found.

Mary Mitchell I have no record of.

Sarah Wright, who came to join her mother in VDL in 1816, had a daughter Sussannah (presumably named after her elder sister) in 1817 to Richard Jordan. Richard was born on Norfolk Island in 1794 and arrived in VDL with his father James Jordan in 1813 on the *Minstrel*. It is not known what happened to Sarah Wright after she was recorded as being at Norfolk Plains in 1823 but her daughter Susannah Jordan remained there with her father and later married William Howard. Their daughter, Charlotte in turn married James Wheeler.

While doing this research I have come across other researchers who have come to the same conclusions on this family as I have and I am sure that somewhere there are descendants of this First Fleeter Elizabeth Fitzgerald/Wilkinson who 160 years after her death we are acknowledging.

FROM THE EXCHANGE JOURNALS

Thelma McKay

The Dec 1992 issue of the *Western Ancestor* (vol. 5, No. 8), published by the Western Australian Genealogical Society, has an article on the history of Tithes. In 1571 the Bishops had to make an inventory, known as a terrier, of all fields, gardens and orchards. Later these inventories became known as the tithes and they can contain a lot of genealogical material with lists of tithe payers and land owners.

A new history publication from the Hampshire County Council is reviewed in the Hampshire Family Historian journal (Feb 1993, Vol. 19, No. 4). *Hampshire & Australia 1783-1791: Crime & Transportation* by Margaret Spence tells of the punishment in Hampshire and in particular the convicts sent out to Australia on the Second Fleet. An Index and sources are included. The paper is available from the Hampshire Record Office, 20 Southgate Street, Winchester SO23 9EF, Hampshire, UK. Price 1 pound, plus postage 60 pence.

A list of deaths for the year 1867, which occurred in the Old Melbourne Hospital was recorded in the *Age* newspaper that year. This list which was printed in the Genealogical Society of Victoria's, Summer 1992/93 edition of *Ancestor* (Vol. 21, No.4) records age, native place and cause of death.

Also in the same edition of *Ancestor* is an article by Gary Presland on the Police in the City of Melbourne. Early records of the police are rather sparse and are held at the PRO in Victoria. By 1858 a new detailed system of recording the Victorian Police came into force and these are held by the Police Historical Unit at GPO Box 2763Y, Melbourne, Victoria 3001. Copies of Records of Conduct can be obtained by writing to the Manager. There is no charge but a large SSAE would be appreciated.

The Autumn 1993 (Vol. 21, No. 5) issue of *Ancestor* contains a list of passengers omitted from the card index of Unassisted Immigrants on board the *White Star*, Liverpool to Melbourne, 1858. There were over 500 passengers who sailed on this ship and the list is held at the PRO in Victoria.

The Deaths of Emigrants at Sea between 1867-69 are being transcribed by Stella Stagg and so far over 4,000 names have been extracted. The majority of these are not recorded in the St. Catherine's House indexes so if you have lost an ancestor between England and Australia or New Zealand contact Mrs Stagg, who may be able to help, at 16 Woodbridge Road, Barking, Essex IG11 9ER, UK. (Wiltshire Family History Society, January 1993.)

The above Society's journal also has a list, for the year 1874, taken from the Victorian marriage Index, of persons who were born in Wiltshire but married in Australia.

Orphans attending the Townsville Central School were listed by the Queensland Family History Society in February 1993 (Vol. 14, No. 1) issue of the *Queensland*

Family Historian. These children came from most parts of Queensland and the listing, showing their age, date admitted and, occasionally, the date of their birth, covers the years 1880 to 1936.

The Brisbane History Group Inc has produced a book covering the people, places, buildings, sporting events and commercial and industrial life of Brisbane. The 180 page, A4 *Brisbane Town News 1842-46* can be obtained for \$15 plus \$3 P&P from PO Box 12, Kelvin Grove, Queensland 4059. *Bremer Echoes* (Journal of the Ipswich Genealogical Society, February 1993, Vol. 11, No.1).

The South Australian Genealogist January 1993 (Vol. 20, No.1) contains an article by Susan Rivett on the Boy Migrants known as the Barwell Boys. Between 1913 and 1929 over 1,700 boys arrived in SA through a scheme which brought British boys to South Australia as farm apprentices. Susan records not only statistics but names of ships, dates of arrival and the sources she has extracted these from.

An alphabetical list of burials in the Old Auckland Cemetery in New Zealand has been recorded in *Links 'N' Chains*. January 1993, newsletter for the Liverpool and District Family History Society. This cemetery is situated on the Southern side of Auckland City and unfortunately vandals and the natural collapse of headstones have left it in a state of disrepair. The Grafton Bridge has been constructed over the ravine where the cemetery is situated. The fifteen page listing, which gives name and date of burial, was taken from the large granite Memorial Wall consecrated in September 1969. The wall records the names and some dates taken from these headstones.

"Setting Sail to a New Land" by Grant Howard tells of the Paisley New Zealand Emigration Society in the 1840's. (*The Scottish Genealogist*, Vol. 40, No.1) March 1993. The article details the Scottish immigrants life on board ship and the promise of land grants on their arrival in Auckland. (Scottish Genealogy Society.)

Captain Robert Melville Gardiner was born in Scotland in 1812, arrived in VDL c1825, moved to Victoria c1855 and then to South Australia by 1868. His connections with Hobart Town and members of his family is recorded in the February 1993 issue (Vol. 13 No.1) of the South East Family History Group newsletter.

Genetics & Family History is an extremely important part of the family history and there are 4,000 or more disorders that can be inherited. *Khanterintee*, No. 13, February 1993, published by the Kiama Ancestral Researcher Society, has an article "I've Got What?" by the Director of the Australian Genealogical Education Centre, Ray Thorburn. He suggests that a simple medical family tree derived from death certificates can be extremely valuable to your doctor to help early detection of disorders.

New Exchange Journals

The Scrivener, newsletter, Calderdale Family History Society, published monthly, Yorkshire West Riding, England.

Suffolk Family History Society Journal, published quarterly.

Berkshire Family History Society Journal, published quarterly.

East Surrey Family History Society Journal, published quarterly.

Peninsula Past Times, Mornington Peninsula Family History Society, Victoria.

DOWN COUNTY MUSEUM

Down County Museum is a community museum helping to explain the history and environment of County Down. It is housed in the recently restored old county gaol - the most complete surviving Irish gaol of its type and period. The Gaol was built between 1789 and 1796 on the same hill whose ancient fort or "dun" gave its name to the town and county of Down. From 1796 to 1831 this gaol was used to house debtors and felons from all over the country. Quite a number of those found guilty of criminal offences were sentenced to transportation to Australia and were conveyed in a specially built cart to the port. Its best known prisoner was the United Irishman, Thomas Russell, who was hanged at the gateway in 1803.

The building ceased to function as a prison in the 1830s, after a new gaol was built nearby. For the next 150 years it had a chequered history, often serving as a military barracks, and falling into ruin. Now this old building has a happier purpose. Within the high walls you can enjoy discovering the past, which helps to explain the present. The Museum has recently opened the old cellblock, with the original cells and day rooms, to the public.

Carrie Wilson is a Junior Fellow of the Institute of Irish Studies at Queen's University in Belfast. Her Fellowship was established in conjunction with Down County Museum for the purpose of research into Ulster Australian Links. Because of the Museum's rich history as a former gaol, particular emphasis is being paid to the convicts who were transported from Ulster to Australia from 1791.

Part of Carrie's project will involve the establishment of a computer database containing information on the lives of transportees both in Ulster and Australia. She is interested in finding out about any convicts who emigrated from Ulster from the late eighteenth century. She is also keen to discover more about the general conditions of life for transportees on board vessels and upon arrival in Australia. Such information will help to inform the exhibitions in the Museum.

If any readers have any information regarding Ulster convicts she would be pleased to hear from them and to share any information that the Museum may already have. Carrie can be contacted either through the Museum, The Mall, Downpatrick, County Down, Northern Ireland BT30 6AH or through the Institute of Irish Studies, Queen's University, 8 Fitzwilliam Street, Belfast BT9 6AW, North Ireland.

GLEANINGS

Correction

In the article "The Final Touch", published on page 42 of the June 1993 issue of *Tasmanian Ancestry*, it was incorrectly stated that the book *Tasmanian Insights: Essays in honour of Geoffrey Stilwell* was printed by St. David's Park Press, Hobart. The printer was in fact the Griffin Press, Netley, South Australia. The author apologises for any confusion that may have been caused by this error.

Getting too close to the ancestors

The following appeared in the Sunday *Mercury* for 2 May 1993:

A TTT-FM disc jockey, whose name I didn't catch, announced on air that the Genealogical Society would meet at Rosny College. At least that's what he **meant** to say. What he **actually** announced was that the Gynaecological Society would be meeting. And I must say he got no help from his fellow DJ as he tried to explain what a group of gynaecologists would be doing looking up their ancestors.

Tasmaniana Library

The opening hours for the Tasmaniana Library and W.L. Crowther Library have been extended and they will be open at the following times:

Monday-Wednesday and Friday	9.30 a.m.-6.00 p.m.
Thursday	1.00 p.m.-9.00 p.m.

As from Monday 5 July 1993 PENS may not be used in the Tasmaniana Library reading room. PENCILS only may be used for note-taking. Pencils are available for loan from the Tasmaniana Library reference desk.

Tasmanian Pioneer Index 1803-1899

The Tasmanian Pioneer Index is now available. It is an index to all birth, death and marriage records for the period 1803-1899 held by the Registrar of Births, Deaths and Marriages and forms part of the national series of Pioneer Indexes. Prior to December 1838 there was no official registration of births, deaths and marriages. The Registry staff has transcribed some early church registers for this period but the coverage is by no means complete. Hence the Tasmanian Pioneer Index contains details from early church registers as well as civil registrations. There are more than 425,700 entries on the database. The original Indexes and Registers are held by the Archives Office of Tasmania. The Index is available on both microfiche and CD-ROM. The microfiche version is available from the Archives Office of Tasmania, 91 Murray street, Hobart 7000 at a cost of \$190.

The Catholic Standard

Robert Wise, Senior Librarian Assistant, Serials section, Reference Library, 91 Murray Street, Hobart is responsible for co-ordinating the filming of Tasmanian newspapers. At present he is trying to get together copies of *The Catholic Standard* for microfilming. He has searched the State Library, Archives Office of Tasmania and University of Tasmania repositories but still has more gaps than issues of this paper. He knows that the paper was first issued on 20 July 1867. If anyone knows the whereabouts of any copies of this newspaper, would they please contact him at the above address or phone (002) 33 7532.

Central Register of Indexing Projects in Australia

A number of people have recently commented on the importance of the book *Specialist Indexes in Australia: A Genealogist's Guide*, compiled by Judy Webster, as "a spot where people can register their indexes and also their plans for future indexes". It has been suggested that "if it could be publicised enough to get the message across, it would eliminate doubling up". One family historian wrote saying,

I had a letter from the librarian of a family history society. He was apparently half way through an index that was the same as mine. My index has been publicised for a numbers of years through many journals, but he has not heard of it.

If these people had been aware of each other's activities, this wasteful duplication of effort could surely have been avoided.

Specialist Indexes in Australia, now in its ninth year, enables project coordinators and individuals to publicise their indexes free of charge. As it is a reference book, and available in both public libraries and genealogical libraries throughout Australia, it reaches many people who might not read family history society journals.

Before commencing any indexing project, the person concerned should ensure that the work is not already being undertaken elsewhere. As well as checking the current edition of *Specialist Indexes*, they should write to the book's compiler, requesting a search in the *Central Register of Indexing Projects*, which includes details of new indexes not yet listed in the book. Guidelines for contributors will also be supplied on request. A stamped self-addressed envelope should accompany all enquires.

Specialist Indexes in Australia is published every second year. The 1992 edition may be ordered from Judy Webster, 77 Chalfont Street, Salisbury, QLD 4107, at a cost of \$10 including postage within Australia. If you wish to be notified when the 1994 edition becomes available, please forward a stamped self-addressed envelope for the purpose.

To be listed in the 1994 edition, entries must be received by 31 October 1993. Entries received after that date will be recorded in the Central Register only, and will not be published until 1996.

1992 Members Interests

Thelma Grunnell writes that an error appears in the 1992 Members Interest volume. John and Thelma's membership numbers is 610A&B in the list of members but appears as 601 in the interests listing. Thelma says the error is theirs as they put the wrong number on their renewal form. Any interested parties please note.

The Cherry Stones Conference

The 7th British Family History Conference, hosted by the Isle of Wight Family History Society and the Federation of Family History Societies is to be held on the Isle of Wight from Friday 31st March to Tuesday 4th April 1995. Further details are available after November 1993 from Mrs. Janet Few, 12 Ranelagh Road, Lake Sandown, Isle of Wight PO36 8NX.

British Isles Genealogical Register

This is a register with a difference.

For many years societies have produced Members' Interests Directories in which members have been able to "advertise" the families they are researching, hoping that others, interested in the same names, would be willing and able to exchange information.

The Federation of Family History Societies is launching a project to list all the families being researched in the British Isles, to be known as *The British Isles Genealogical Register: a national list of family names being researched by family historians*, to complement the present system of county/society/regional directories to which comparatively few members contribute.

It will be open to everyone. An application form is included in this journal. Family historians living outside the United Kingdom with ancestral roots in the British Isles will also be able to contribute.

Unlike other research directories, the British Isles Genealogical Register is county based and it will be available in county sections, e.g. Yorkshire section will contain Yorkshire interests only, thus helping family historians to concentrate their interests within one county. This should increase the possibilities of "family contacts" and enable subscribers to select only the counties in which they are interested. Ireland, Scotland and Wales will be processed as separated sections, as will be the Isle of Man and the Channel Islands. The Register will be based on pre 1974 historic counties.

The Federation of Family History Societies invites you to register the surnames that you are researching in the British Isles. In this way, you can make your interests known to thousands of other family historians world wide.

Each contributor submits their research names with places and dates for a £1 fee per form (16 entries) which will cover the operating costs of the project. This fee should be paid by Sterling cheque on a UK bank or by uncrossed UK Postal Order. Contributors

from outside the UK may pay by sending Dollar bills (\$3 Australian or New Zealand, \$2 Canadian or American) or the equivalent in UK postage stamps.

Family Origin Name Survey (FONS)

FONS is a non-profit organisation aimed at making accessible to family historians the vast mediaeval record archives of the British Isles. The organisation has embarked on a programme which will ultimately produce a computerised database containing all surviving record material from the period before 1600 (with exception of baptisms and marriages, which should eventually be covered by the IGI).

The records of the Middle Ages from which information is to be extracted and entered on to the database include Administrations, Ancient Deeds, Assize Rolls, Bishops' Registers, Burial Registers, Cartularies, Charter Rolls, Court Barons, Court Leet, Curia Regis Rolls, Ecclesiastical Courts, Eyre, Feet of Fines, Fine Rolls, Heraldic Visitations, Hundred Rolls, Inquisitions Miscellaneous, Inquisitions Post Mortem, Lay Subsidies, Liberate Rolls, Pipe Rolls, Poll Tax, Proofs of Age, State Papers, Treaty Rolls, Wills.

Already a large amount of mediaeval material has been assembled and it is constantly being added to. The material is diverse, including direct transcripts from the manuscripts, printed material (including copies of originals now lost) and record calendars. The material on the database is not sorted by locality thus the service is mainly useful for tracing entries relating to the more uncommon surnames; in other words, for one name studies or for families with names rare enough for any material likely to be of interest.

FONS also has access to archives including will abstracts, will lists and other name lists (poll books, land tax assessments, muster rolls, etc.) from the period 1600 to 1858. This database is also continuously being enlarged and computerised.

Information from either database will be made available to individuals or groups registering with the organisation at a fee for each entry. Funds raised in this way are to be devoted to increasing the databases. For further details regarding registration and costs contact Family Origin Name Survey, The Strines, Upper Hulme, Leek, ST13 8UL, England.

Waddell Family Research

Mrs. Caraline Bingley (nee Waddell) is researching the relationships between the families whose surnames are all variations of her maiden name. She has so far traced over 200 variations some of which are:- Dowdall, de Uvadal, Goodall, Hoddle, Odell, Udall, Uvadale, Waddle, Waddell, Weddle, Woodall, Woodhall, Wodhul, Yewdale. Most appear to stem from a Fleming, Walter de Wadhelle who held the Barony of Odell in 1086 but others may be of older descent as Gwedyal is Gaelic for the Irishmen who invaded Wales and Scotland. Many Woodhalls can be traced back to manors of that name but Caraline finds that some of those manors were originally held by descendants of the Barony. Any members interested in any of these names can contact Mrs Bingley at Flat 1, 19 St. Stephens Gardens, Twickenham, Middlesex TW1 2LT.

City of London Burial Index

Robert Wilsmore holds a copy of this index of over 30,000 burials in the churches in the inner city of London for the period 1813 to 1853. He is prepared to search the index for burials without charge for any member of the Society upon written request with a stamped addressed return envelope. Robert's address is PO Box 368, Wahroonga, NSW 2076.

The Batten Connection

Mr Kenneth Batten has undertaken a world-wide study of the Batten name and its variant spellings. To date he has collected 3,500 entries, mainly from old parish registers, public libraries, the IGI, census records, civil indexes, Genealogical Societies and by writing to Battens. The result of this research has recently been put on to microfilm by the LDS church and will be available through their Family History Centres. Mr. Batten would like to hear from any members who have Battens in their family tree. He can be contacted at 3 Glains Road, Bridge of Don, Aberdeen AB22 8TT, Scotland.

Research Hints from a Devonshire Correspondent

Records available at the Devon County Records Office, Exeter include:

Settlements and Apprenticeships for some parishes in typescript.

Wills 1818-1853 in alphabetical order.

School records; beginning about 1875.

Convicts tried in Devon

Calendar of Prisoners 1700-1890 but no records of trials. If a prisoner was tried and sentenced to transportation and held in Gaol for a time you can usually pick them up with the time of trial and sentence in the Calendar of prisoners.

Name indexes.

Occupation indexes

Burial records for the Devon Asylum

Lunatic returns by parish.

Church Vestry minutes for doling out money and goods to the poor.

Peskett's *Devon Parishes* (copy at Launceston branch library) is valuable for tracing parishes not listed on the IGI and also parishes which are not listed completely on the IGI. For example Stoke Damerel baptisms are listed only up to 1852 on the IGI and Plymouth Stonehouse is not filmed. There were a lot of marriages performed in these parishes, especially of Army and Naval personnel. As many people went from villages to work at the Dockyards, you often find that they married in the local parish. If a girl became with child they would often go to the nearest city and marry hoping perhaps that no one would see them there.

Many records for the areas surrounding Plymouth are kept at the Coxside, Plymouth Offices of the Devon County Record Office and Launceston Branch library has a booklet listing the whereabouts of Devonshire parish records.

A Timely Warning

Mrs. Ridge, a member from Wynyard, writes with a message to both old and new researchers of not having all the eggs in the one basket and of including your name and address in all your notebooks.

An aunt and uncle of hers shared all their research with her by means of carbon copies and photocopies. Later, when their research was lost in an unfortunate house fire, her duplicates became very precious.

Another relative of hers lost her treasured notebook while in Melbourne shopping and although it didn't have her postal address, her name and district were inscribed in it. Realising the book's importance, the shop concerned had made enquiries and it was forwarded on to her about six months later.

In the Somerset/Devon Society magazine a member wrote of his loss as a warning to others. Work commitments had given him a full free day in London with an early flight out the next day. A golden opportunity for a visit to St. Catherine's House. His notebook containing research and jottings from family interviews went along with him. After a happy day he settled into his hotel bed for a last read through of his findings and then slept well until his pre-arranged early call. On reaching home some days later and unpacking he could not find his notebook. Yes, he had left it on top of his bedclothes and when these were turned back on arising, they covered the book and it was left in the rush. Sadder and wiser he realised that the public records can be seen again but he had lost interviews with now deceased relatives.

Headstone with Tasmanian connections

Mrs L. Porter, Victoria, writes that she found the following information on a headstone at the Camperdown cemetery in Victoria. Agnus is buried in the Manifold family plot.

In memory of
AGNUS
relict of
ARCHIBALD THOMSON
of Cormiston Tas.
D 20th Jan 1868
aged 64 years.

FAMILY REUNIONS

GUNTON FAMILY REUNION

A family reunion will be held at Evandale in 1994 for the many descendants of James Gunton and Ann Minton. James came to Tasmania from Norfolk, England in 1831 and Ann from Ireland in 1835. They were married at Campbell Town in 1838 and they had 3 daughters and 5 sons. James set up as a farrier and smith at Cleveland and later at The Nile. A great deal of research has been made into that family and just some of the names of their descendants include Armstrong, Birch Craig, Clark, Crichton, D'Angelo, Donaldson, Douma, Gladman, Gunton, Guy, Hearps, Henning, Hope, Howroyd, Hughes, Humphreys, Jack, Kean, Kidd, Kitto, Lacey, Leonard, McGuire, McQuestion, McRae, Mearns, Midgeley, Miller, Palmer, Riley, Rainbow, Robertson, Sutherland, Shea, Slater, Thorn, Trimper, Tuttle, Van Eyke, Wade, Wallace, Waters, White, Williams, Wilson, Woods, Wright and Yates.

For further information please contact Ann Everett, 21 Van Diemen Avenue, Summerhill, Tasmania 7250.

COMING EVENTS

- 14 September 1993 THRA meeting - Mr. Shayne Breen: "J.P. Fawcner's Ideology of Justice".
- 12 October 1993 THRA meeting - Dr. Alison Alexander: "Reg Barker at Electrolytic Zinc".
- 16 October 1993 "Here from the beginning: women's contribution to Tasmania's History" - the Second Tasmanian Biennial Seminar for Historical Societies, hosted by the Launceston Historical Society, to be held at the Launceston College.
- 31 October 1993 Jericho to Ross tour by VDL-Norfolk Island group. Contact Irene Schaffer, (002) 28 7815 for further details.
- 9 November 1993 THRA meeting - Mr. Tim Jetson: "Captain William Langdon".
- 20 November 1993 State Executive Meeting at Campbell Town Town Hall, commencing at 10.00 a.m.
- 7-10 July 1994 "Blending the Cultures" - The seventh Australasian Congress on Genealogy and Family History, to be held at the Queensland University, St. Lucia Campus, Brisbane.

NEW RELEASES!

WHITTON'S INDEXES TO THE *Mercury* BIRTH, DEATH & MARRIAGE NOTICES 1858-1899

Compiled by K. & A. Whitton

The Hobart Branch has just released three new volumes which will be of great benefit to all researchers with Tasmanian heritage.

These Indexes have been published from index cards donated to the Society by Kevin Whitton who, with the help of his father Albert Whitton, compiled the collection from fortnightly and/or monthly summaries for selected years from Hobart's daily newspaper The *Mercury*. There are nearly 2,500 birth entries, 4,800 death entries and 2,100 marriage entries which are cross-referenced under both brides' and grooms' names. Where possible additional information has been added such as age at death, name of parent or spouse and the place of birth, death or marriage (and/or residence); many of these events occurred in other States or countries and may explain that "missing" ancestor. The years not included in these editions will be published later during 1993 in the O'Shea Indexes to The Mercury - Births, Deaths and Marriages 1854-1899.

These books are available from The Librarian, GST, Inc. Hobart Branch, GPO Box 640G, Hobart 7001 as follows:

WHITTON'S INDEX TO BIRTH NOTICES 1858-18992	\$10.00
WHITTON'S INDEX TO DEATH NOTICES 1858-1899	\$15.00
WHITTON'S INDEX TO MARRIAGE NOTICES 1858 1899	\$15.00

Postage and handling: \$2.50 each, or \$5.00 the set.

MEMBERS' INTERESTS

1992 Directory

The State Executive has published the Members' Interests for 1992. The list has been made up, as far as possible, from names submitted during the 1992-1993 year by members, both new and existing, on their renewal or application forms. The aim was to include all names submitted during the "membership" year, i.e. April 1992 to March 1993, but some late arrivals were not received in time for inclusion. The directory contains approximately 3,500 entries from members of the Society. Names submitted in previous years are not included.

Available from the GST Inc., PO Box 60 PROSPECT, Tasmania 7250

Cost is \$15 plus P&P (\$3.00 Tasmania, \$4.00 Australia)

LILYDALE AND KAROOLA CEMETERIES

Set 5 Microfiche

The Launceston Branch has just released a new set of five microfiche on the general cemeteries at Lilydale and Karoola.

The microfiche contain the full transcriptions of all headstones in these cemeteries. Further information has been obtained from the cemeteries burial records and newspapers. Other information that may be on the microfiche includes name of spouse, parents or siblings, age, year of marriage, date of burial, funeral director, etc. References are given to death notices in The Examiner, Mercury, Advocate and North east Advertiser. Information is included for those buried at the cemeteries but the grave does not have a headstone. The microfiche contains the following alphabetical lists:

- Memorials at Lilydale General Cemetery
- Burials at Lilydale General Cemetery without Memorials
- Karoola General Cemetery

Cost of set is \$5.00 (plus \$2.00 P&P)

Available from PO Box 1290 Launceston Tasmania 7250

**Historical Research Ireland
Full Family History Researched
including Births, Marriages & Deaths
also Census Returns 1901 & 1911**

Patrick Hogan

92 Bishopswater, Wexford, Ireland

Tel: 010-353-53-45976

Enclose \$3.00 for "Information Pack"

WESTERN AUSTRALIAN HISTORICAL RESEARCH

Undertaken promptly and at moderate fees.

Contact: Ms H.B. Charlesworth, B.A.,
Grad. Dip. Arts in Local History

25 Links Road, Andross, WA 6153

BOOK REVIEWS

The Women of the 1790 Neptune, by Anne Needham with Laurel Riddler, Merle Hadley, and Phyllis Scott, published privately, 1992, Dural, NSW, soft cover, A4, 187 pages printed on high quality paper, maps and illustrations. The price has been kept to a minimum; \$25 plus postage & packing (Tasmania 1 book, \$7.95; 2 or 3 books to the same address, add \$10.35). Available from Anne Needham, PO Box 60, Dural, NSW 2158.

The research for this book was conducted over a period of six years, including a research tour of all the areas in England. The book has been broken down into the various Assize circuits. The authors explain the legal system that was in force at the time and describes the conditions in each gaol.

The Judges, appointed on 10 February 1778, with their circuits, are listed and detailed maps for each circuit in England and Wales have been included. One circuit may cover several counties e.g. the Norfolk circuit covers Suffolk, Cambridge, Huntingdonshire, Bedfordshire, and Buckinghamshire. Illustrations include drawings of churches and of items stolen.

The women transported on board the *Neptune* came from all over England. Details of the trials of the seventy eight female convicts who sailed on board the *Neptune*, including those who died on the voyage or for whom there are no records after the ship's arrival, are included as well as some details for the thirty two who appeared on the indent for the *Neptune* but did not sail on board her. Some were transported on board other ships of the Second Fleet, others remained in England. There were nine who came free, wives of men of the New South Wales Corps or free wives of convicts.

The authors describe the voyage out and give details of the lives of the women after their arrival in the colony including who they lived with or married.

To researchers of the First to Third Fleets and of the early history of New South Wales it could be a valuable reference book, giving a carefully researched picture of England at the time.

On July 27th I had the pleasure to attend a picnic held at Dural NSW for the descendants of these women. Approximately 200 people attended, representing 14 of the original women. Large display boards were filled with pedigree sheets, photographs, maps, and sketches. Everyone seemed to enjoy the day making contact with distant relatives. Everyone that I met had praise for the book. Descendants of twenty one of the women on the *Neptune* have made contact with Anne.

The book was written as a memorial to the women who travelled to New South Wales in the transport, women who had sinned in a petty way and paid through harsh treatment in goals and hulks, deportation and their treatment on the transports. Many were again sent to Norfolk Island and then Van Diemen's Land. Women who were put out of mind by their descendants because of the convict taint, but made new lives, raising families and gaining respect in their municipality.

Betty Calverley

Genealogy indexes in New Zealand, compiled by A. Philp and published in 1993, this is a booklet in the Lost Links series, giving details of over 200 indexes used in New Zealand genealogical research.

It includes indexes of newspapers, cemeteries, church records, shipping, photographs, patents, Registrar-General's records, wills, educational, business, military and many other kinds of records. Indexes are listed alphabetically by title with location, indication of whether research enquiries are accepted and, if so, whether there is a charge. There is a subject index to the contents of the booklet, which is to be revised every two years. The compiler would like to be advised of any appropriate indexes known to researchers and not included in this edition. This is a comprehensive publication suitable for both the genealogical society library or the genealogist's own collection.

It is available from PO Box 7038, Mornington, Dunedin, New Zealand, and is on display at the Hobart Branch Library.

Theo E. Sharples.

AFFHO Directory of Genealogical Organisations in Australasia, edited by Heather E. Garnsey and Martyn C.H. Killion, Sydney, Australasian Federation of Family History Organisations, 1992, A5, soft cover, loose leaf. Available from AFFHO, c/- 120 Kent Street, Sydney, NSW 2000 at a cost of \$17 (includes P&P).

This directory gives the names and addresses of all the known family history, one name and clan organisations in Australasia. Questionnaires were sent to 271 organisations and the details provided by the 152 that answered are included in the directory. The information requested from each society included name, address, telephone, facsimile, year of establishment, subscription rates, library address and opening hours, reciprocal rights, meeting times and venue, research services and costs, journal name and frequency and comments and additional information. It is to be regretted that not all organisations answered the questionnaire.

The Directory usually provides enough information for a person to decide whether to visit a particular organisations library or join the society. It would be particularly useful for anyone planning an extended research trip to an area. The loose-leaf format should make it easy to update the information on individual societies.

Federation of Family History Societies (FFHS) Publications

Quarter Session Records for Family Historians: A Select List, edited by Jeremy Gibson, 3rd edition, FFHS, 1992, A5, soft cover, 48pp, £2.50

This is an update of the second edition published in 1982. Much cataloguing and listing has been done by county record offices during the last decade. Entries for many counties, e.g., Kent, Norfolk and Northumberland, give much more information than is given in earlier editions. Reference is made to guides to individual record offices, where they are available, and to research in the records of the Quarter Sessions

themselves. The booklet covers records for England and Wales. A must for anyone searching convict ancestry.

Local Census Listings, 1852-1930: Holdings in the British Isles, edited by Jeremy Gibson and Mervyn Medlycott, 3rd edition, FFHS, 1992, A5, soft cover, 60pp., £2.50.

"Local Censuses" is a phrase coined by population historians to identify detailed inhabitants lists, other than the 1841-1891 civil censuses, which give names, at least, of householders and seem complete for a community. The term excludes lists that do not give names. Included are listings such as quasi-census Easter Books, communicants lists in England and Wales, Examination Rolls in Scotland, catholic and protestant church members in Ireland. The book is not comprehensive as some listings are included in other guides such as *Tudor and Stuart Muster Rolls* and *The Hearth Tax, other Later Stuart Tax Lists and the Association Oath Rolls*. The listings are chronological by county which are listed alphabetically. Within each county the Censuses are grouped under various sub-headings all named with ages, all named and householders named with household numbers. The book covers England, Wales, Scotland, Ireland, the Channel Islands and Isle of Man.

An Introduction to Irish Research - Irish Ancestry: A Beginner's Guide. Bill Davis, FFHS, 1992, A5, soft cover, 90pp. £4.75 surface mail, £5.68 airmail.

The aim of the book is to guide readers on to the correct path, enabling them to avoid some of the common pitfalls on the way. It does not attempt to provide answers to every problem. It is simply, as its title indicates, an introduction to Irish research. The author gives a number of hints as to how to conduct research from afar and answers simple questions such as how to obtain English and Irish stamps and which to send. The book contains a very brief outline of Irish history and the reasons for emigrating. A list of addresses for the Heritage and Research Centres in Ireland, record repositories in UK, USA and Australia and Genealogical Societies are included. However in the section on transportation and convict records no mention is made of Tasmania or Van Diemen's Land, the convict records for this colony or the Archives Office of Tasmania. The book is not up to the standard of other FFHS publications, nevertheless it is a useful reference tool for those with Irish ancestry.

British Genealogical Periodicals : A Bibliography of their Contents Volume 3 Miscellanea Genealogica et Heraldica, in two parts, Stuart Raymond, FFHS, 1993, A5, soft cover. Part 1 Sources 92pp., £4.50 and Part 2 Families 60pp., £4.00.

The thirty one volumes of *Miscellanea Genealogica et Heraldica* are a veritable treasure chest of information, however it is very difficult to use without a guide. These two new publications provide that guide. They list the contents of this journal which includes numerous extracts from or abstracts of parish registers, monumental inscriptions, probate records, entries from family bibles, grants of arms etc. together with large numbers of pedigrees and notes on particular families. The citations given will enable researchers to obtain copies of relevant articles, via the inter-library loan system. Part 1 contains author, place and family name indexes while part 2 has author and place indexes.

County Genealogical bibliography series, Stuart Raymond, FFHS, 1993, A5, soft cover. Volumes for *Cumberland and Westmorland* (68pp., £5.00), *Norfolk* (92pp., £6.00), *Oxfordshire* (60pp., £5.00) and *Wiltshire* (84pp., £6.00) have recently been published.

Each of these volumes provides a comprehensive list of genealogical source material, including parish registers, monumental inscriptions, probate records, directories, official lists of names, ecclesiastical records, estate and family papers, records of national, county and parochial administration, educational records etc. Also listed are many family histories and published collections of pedigrees, together with useful information on the general histories of the respective counties and lists of local journals. These volumes will be the essential guide to published sources of genealogical information for each county; no genealogist can afford to be without one for the area in which their ancestors lived.

Other Recent FFHS Publications include:

Accommodation Register, 1992, A5, soft cover, 24pp.

Forming a One-name Group, Derek A. Palgrave, 4th edition, 1992, A5, soft cover 17pp.

Rayment's Notes on Recording Monumental Inscriptions, 4th edition, revised by Penelope Pattinson, A5, soft cover 34pp.

Family History Society Secretaries: Notes for guidance, Gillian Thompson, 1993, A5, soft cover, 11pp.

Publishing Family History Journals, revised 1993, A5, soft cover, 12pp.

All FFHS publication can be obtained from the FFHS, Benson Room, Birmingham & Midland Institute, Margaret Street, Birmingham B3 3BS, England. Please allow extra for postage.

DISCLAIMER

The Genealogical Society of Tasmania Inc. does not accept responsibility for any material published in the name of the Society where such material has not appeared in the list of publications appearing from time to time in the Society's journal *Tasmanian Ancestry*

SOCIETY SALES

The GST Inc. has published the following items which are all (except the microfiche) available from Branch Libraries. All Mail Orders should be forwarded to the Sales and Publications Co-ordinator, PO Box 60 PROSPECT, Tasmania, 7250. Please allow extra for postage.

Microfiche

GST Inc. TAMIOT Records - 33 fiche (P&P \$2.00).....	\$75.00
An index to headstone inscriptions and memorials transcribed from cemeteries from all parts of Tasmania.	

Books

Our Heritage in history: Papers of the Sixth Australasian Congress on Genealogy and Heraldry, Launceston, 1991	32.00
Our Heritage in History: Supplement	16.00
Van Diemens Land Heritage Index Vol. 2.....	10.00
Van Diemens Land Heritage Index Vol. 3.....	16.00
1992 Members Interest.....	15.00
1991 Members Interests	15.00

Other Items

GST Inc. Book Marks	0.75
Congress Bookmarks	0.75
GST Inc. Tea Towels	7.00
Congress Tea Towels	2.00
Congress Satchels - Filled.....	4.00
Congress Satchels - Empty	3.00
Folios of sets of 6 Greg Waddle prints. 14 different sets available:- Latrobe, Launceston, Longford, National Trust, Port Arthur, Richmond, Risdon Cove Historic Site, Ross, Stanley, Swansea, Tasmania (2 different), Ulverstone, Zeehan. Price per set	3.00

BRANCH SALES

PLEASE NOTE THAT ITEMS ADVERTISED BELOW ARE AVAILABLE ONLY FROM THE BRANCHES AS LISTED AND MUST BE ORDERED FROM THE ADDRESS GIVEN.

LAUNCESTON BRANCH SALES

The Launceston Branch has the following publications available for sale at its branch library:-

Branch Publications

Carr Villa Memorial Park Burial Records on microfiche (P&P \$2.00).....	30.00
Index to Births Deaths and Marriages from the Examiner:-	
Vol. 1 (1900-1910)	20.00
Vol. 2 (1911-1920)	25.00

Vol. 3 (1921-1925)	15.00
Vol. 4 (1926-1930)	17.00
Vol. 5 (1931-1935)	20.00
Vol. 6 (1936-1940)	25.00

The Cornwall Chronicle: Directory of Births, Deaths & Marriages 1835-1850.....20.00

Books

Engraved in Memory, Jenny Gill	28.00
Army Records for Family Historians	10.00

Mail Orders should be forwarded to the Publications Officer, PO Box 1290, LAUNCESTON, Tasmania, 7250. Please allow extra for postage.

DEVONPORT BRANCH SALES

Oral History Handbooks	5.00
Pre 1841 Census & population Listings	10.00
Army Records for Family Historians	10.00
Beginning Your Family History, G. Pelling	11.50
Compiling Your Family History, Nancy Gray	7.00
Family Record Binder Kit	26.00
Family Tree Ancestral Record	7.00
Gloves (for handling photographs) (per pair)	1.50
Pens (for writing on photographs)	3.00
Devonport Branch Holdings List	2.00
7 Generation Ornate Pedigree/Tree Chart	4.00
15 Generation Pedigree Chart	3.00
Tree Chart	
Family Group Charts	0.15
Pedigree Charts	0.20
Plastic Pockets	0.20
Coloured Folders	

Mail orders should beforwarde to the Secretary, PO Box 587, Devonport, 7310. Please allow extra for postage.

HOBART BRANCH SALES

Charts

5-Generation Chart.....	0.15	Family Tree Record.....	6.50
9-Generation Chart.....	2.30	Family Records Binder	15.00
12-Generation Chart.....	2.50	Family Group Forms	0.15
15-Generation Chart.....	3.00	Lined Family History Pages	0.20
7-Generation Chart (green & gold tree).....	4.00	Blank Card pages	0.25
Our Family Tree Chart (new).....	5.95	Document storage file	0.35
Beginners kit (not for mail order)	4.30	Acetate envelopes for binder.....	0.85
Family Pedigree Chart (a working "Score sheet").....	3.00		

Publications Guides, etc.

Archives Office of Tasmania (revised 1992).....	2.00
Searching Tasmanian Land Records	0.60
"Let's Begin"	0.60
Notes on Cemeteries in Tasmania (A4).....	0.60
Family History Records in Tas (A4).....	0.60
FFHS News and Digest (plus postage 1.50) each.....	4.00

Books

How to Record your Family Tree	5.95	Beginning your Family History.....	5.95
Trying to find Seafaring Ancestors.....	1.20	Writing a Family History	7.50
Ancestor Trail in Ireland.....	5.50	Compiling your Family Tree	5.50
Society of Australian Genealogists.....	7.00	Visible Immigrants	9.50
Burials of First Fleeters VDL.....	5.00	First Fleeters buried at St. David's.....	\$2.00
Tasman Peninsula Chronicles Nos. 1-6 each.....	7.00		
Computers in Genealogy (New Edition).....	14.95		
Bishop Transcripts and Marriage Licences (English).....	5.50		
Short Guide to tracing Convict Ancestry.....	3.00		
Index to Early Land Grants VDL 1804-1823 (A4 soft cover).....	8.00		
Profiles of Norfolk Islanders to VDL: Lady Nelson 1807 Vol 1.....	9.50		
Porpoise Vol 2 Pt 1	20.00		
Porpoise Vol 2 Pt 2	20.00		
Family History for beginners, Heraldry & Genealogical Society, Canberra.....	9.00		
The Archers of Van Diemen's Land.....	POA		
Index to Tasmanian Births/Baptisms 1803-40, A4 soft cover.....	18.50		
Tasmanian Land Grant Wall Maps	10.00		
Whitton Index to Hobart Mercury BDM set of 3 volumes	\$40.00		
Infants at Queen Orphanage, Hobart 1851-1863.....	\$4.50		
Children in Queens Orphanage, Hobart Town 1828-63.....	\$12.00		
VDL Early Marriages 1803-1830.....	\$15.00		

The above is a sample of what is on offer at the Hobart Branch Library. Place your order with the Librarian, GPO Box 640G, Hobart, Tas 7001. Please allow for postage. Prices are subject to change without notice. If you require assistance in obtaining any book, journal or stationery item contact the librarian.

BRANCH LIBRARY ADDRESS, TIMES AND MEETING DETAILS

BURNIE

Phone: (004) 35 7349 (Branch Secretary)

Library: 62 Bass Highway, COOEE, (above Bass Bakery)

Tuesday, 11.00 a.m. - 3.00 p.m.

Saturday 1.00 p.m. - 4.00 p.m.

Meeting: Branch Library, 62 Bass Highway, Cooece, 8.00 p.m. on 3rd Tuesday of each month, except January and December. The library is open at 7.00 p.m.

DEVONPORT

Phone: (004) 24 5328 (Mr. & Mrs. D. Harris)

Library: Rooms 9, 10 and 11, First Floor, Days Building Best Street, DEVONPORT

Wednesday 9.30 a.m. - 4.00 p.m.

Friday 9.30 a.m. - 4.00 p.m.

Meeting: Branch Library, First Floor, Day's Building, Best Street, Devonport, on the last Thursday of each month, except December.

HOBART

Phone (002) 44 2984 (Branch Secretary)

Library: 19 Cambridge Road, BELLERIVE

Tuesday 12.30 p.m. - 3.30 p.m.

Wednesday 9.30 a.m. - 12.30 p.m.

Saturday 1.30 p.m. - 4.30 p.m.

Meeting: Rosny Library, Bligh Street, Warrane, 8.00 p.m. on the 3rd Tuesday of each month, except January and December.

HUON

Phone: (002) 66 0263 (Branch Secretary)

Library: Soldiers Memorial Hall, Marguerite St., RANELAGH

Saturday 2.00 p.m. - 4.00 p.m.

1st Wednesday of month 12.30 p.m. - 2.30 p.m.

Meeting: Branch Library, Ranelagh, 7.30 p.m. on the 2nd Monday of each month, except January.

LAUNCESTON

Phone: (003) 31 1150 (Branch Secretary)

Library: Flat 2, 47-49 Elphin Road, LAUNCESTON.

Tuesday 10.00 a.m. - 3.00 p.m.

Wednesday 7.00 p.m. - 9.00 p.m.

Saturday 2.00 p.m. - 4.00 p.m.

Meeting: Kings Meadows High School, Guy Street, 7.30 p.m. on the 1st Tuesday of each month, except January.

MEMBERSHIP IN THE GENEALOGICAL SOCIETY OF TASMANIA INC.

Membership of the GST Inc. is open to all interested in genealogy, whether resident in Tasmania or not. Assistance is given to help trace overseas ancestry as well as Tasmanian.

Dues are payable each year by 1 April. Rates of subscriptions for 1991/92 are as follows:-

Ordinary member	\$25.00
Joint members (2 people at one address)	\$33.00
Student/Pensioner/Unemployed over 6 months	\$17.00
Joint pensioners	\$23.00
Corporate Members (Institute or Society)	\$33.00

Membership Entitlements:

All members receive a copy of the Society's journal TASMANTIAN ANCESTRY (No. airmail postage is extra). Members are entitled to free access to the Society's Libraries. Access to libraries of some other societies has also been arranged on a reciprocal basis.

Application for Membership:

Application forms may be obtained from Branches or the GST Secretary, and be returned with appropriate dues to a Branch Treasurer or sent direct to the GST Treasurer, PO Box 60, PROSPECT, Tasmania 7250. Dues are also accepted at Libraries and Branch Meetings.

Donations:

Donations to the Library Fund (\$2.00 and over) are TAX DEDUCTIBLE. Gifts of family records, maps, photographs, etc. are most welcome.

Research Queries:

Research is handled on a voluntary basis in each branch. Simple queries from members will be answered on receipt of a large stamped addressed envelope when membership number is quoted. For non-members there is a fee charged. A list of members willing to undertake record-searching on a PRIVATE BASIS can be obtained from the Society. The SOCIETY TAKES NO RESPONSIBILITY FOR SUCH PRIVATE ARRANGEMENTS.

Advertising:

Advertising for Tasmanian Ancestry is accepted with pre-payment of \$20.00 per quarter page in one issue or \$50.00 for 4 issues. Further information can be obtained by writing to the Journal Co-ordinator at PO Box 60, PROSPECT, Tasmania 7250.

MEMBERS' QUERIES

Research queries are published free for members of the GST (provided membership number is quoted) and at a cost of \$5.00 per query (surname) to non-members. Members are entitled to three free queries per annum. All additional queries will be published at a cost of \$5.00. Only one query per member per issue will be published unless space permits otherwise. Queries should be limited to 100 words and forwarded to The Editor, PO Box 60, PROSPECT, Tasmania 7250.

BARRY/BERRY

John BARRY married Elizabeth TIMBS in Hobart in 1862. Their children were: Joseph, John, Elizabeth, William, Marie Jane, Amelia, Charles and Richard. All children were born at Kingston. John married Sarah KING at Launceston in 1884. Any information please contact Mary Moody, 8 Neiley Street, Newtown, Victoria 3220.

BUBB

Mrs. Beverley Hossack (1319) is seeking information on a George BUBB who married a Matilda BRADLEY in the 1860s at Hobart. Matilda later married a Mr. COOPER and moved to Bairnsdale, Victoria. George William (1863), Emma (1868) and Ernest Albert (1871) were all born at Hobart. Beverley is seeking contact with descendants. Please write to 7 Corrella Crescent, Peregian Beach, Queensland 4573.

BUCKLEY/BIRNIE

Ann Elizabeth (Annie) BUCKLEY married George BIRNIE on 29 August 1883 at Launceston. After WWI they moved to Sydney (Coogee or Bondi?). Known children (some of whom may have stayed in Tasmania) are: Grace BIRNIE; Ethel married Sidney STANTON (children George; Reg married Sheila WISE); May; Jean married Baxton(?) WILLIE (WYLLIE?), a footballer; George; Frank and Vera. Annie BUCKLEY was a daughter of Dennis BUCKLEY and Elizabeth BRENNAN of Westbury and was a sister of my great-grandfather Dennis John BUCKLEY. Any information about descendants of Annie and George to Ross Buckley (365), 64 Cornwall Street, Rose Bay, Tasmania 7015 please.

BULMAN

Malcolm Turnbull (3352) is seeking information on three brothers, Peter, James and Robert Bulman, who emigrated to Tasmania from Scotland around 1860. Peter and James were pioneers in the Ringarooma district and John farmed near St. Leonards. Peter married Agnes HOGARTH, started the Waverley Woollen Mills and died in 1896. James married Margaret STEWART, had four children (including my great-grandmother, Agnes) and was accidentally killed in 1873. He would welcome any further information. Write to Malcolm at 51 Gillies Street, Fairfield, Victoria 3078.

CARTLEDGE/SHEARER

James CARTLEDGE (widower) married Margaret SHEARER (spinster) at the Collegiate Church, Manchester in September 1837. Four children were born in England: James, William George, John and George. James and William died in infancy. The family arrived in Tasmania on board the ship London in July 1844 accompanied by John, a brother of James.

Four more sons were born in Tasmania: William (1845), James (1848), Robert (1849) and Thomas (1851). Much is known of the family in Australia but details of, or clues into the life of both parents in England is eagerly sought by Terry Kopp (3247), PO Box 322, Ballina, NSW 2478. All letters will be answered.

CATTON/Ryan

Thomas CATTON arrived in Hobart, Tasmania as a convict from Suffolk, England in 1852. He was pardoned in 1854 and married Honora RYAN. He was appointed a Petty Constable at New Norfolk, Tasmania in 1857. Thomas and Honora had four children: Emma (1855); Susan (1857); James (1859) and William Thomas (1860). The children all married in Victoria. Gayle Williams was wondering if anyone knows how they came to Victoria after 1863 and where Thomas and Honora CATTON died. Contact Gayle at RSD Chillingollah Road, Woorinen, Victoria 3589.

CAVILL/CURTIS

Hannah Louisa (Annie) CAVILL married Jack CURTIS. Annie was born in Tunbridge on 5 November 1894, the daughter of William James CAVILL and Louisa Caroline HALL. I would like to contact any of their children. Possible names are Max, Colin or Christina. Annie died at Richmond. Contact M. Power, 8A Wilsdon Street, Queenstown, Tasmania.

CLARK/BROWNING/CANTLING

William CLARK, born circa 1813, possibly Tasmania, occupation farmer, lived with Mrs. Ann BROWNING at Redlands, New Norfolk. Their children were Elizabeth (born 1843, married James BOON); Sarah (1845, married Charles LEWIS); Charles (1848, married Eliza Ann STRETTON) and William (1850, married Rosina LEWIS). Mrs. Ann BROWNING died in 1852. William CLARK married Catherine CATLING in 1855. Their children were: Jane (1856), Thomas (1857); female (1860); Arthur (1862); Alfred (1864), Catherine (1865) male (1867) and Edward. Any information on these families would be appreciated by Mrs. Jan Scanlan, 13 Andrew Street, West Ryde, NSW 2114.

CLARK(E)/DOHERTY

Joseph CLARK(E) married Mary (Ann) DOHERTY on 2 January 1854 at St. Joseph's Church, Hobart. From convict records, Mary Ann was born circa 1831, arrived from County Carlow on 22 May 1852 and died 28 June 1869. They had eight known children born while living at South Arm: William (1854); Annie (1856) Joseph (1857); Mary Ann (1859); Charles James (1861); Sarah (1863); Henry James (1864) and Euphemia Jane (Luckenia?) (1866). Cheryl Clark (3319) is desperately seeking descendants or any information on both Mary Ann's Irish history and where Joseph originally came from and where he moved to around 1868-69. Please contact Cheryl at 2 Sunhaven Court, Midway Point, Tasmania 7171 or phone (002) 65 1416.

CONNOLLY

Michael CONNOLLY, a merchant, banker, brewer and No. 15 of Port Phillip Association had a store in Launceston. Are there any records to show his entry into Tasmania (maybe from New South Wales) and where he came from in circa 1830 he married Rachael Emeline BOSTOCK, daughter of Robert and Rachael BOSTOCK of Vaucluse. Any information greatly appreciated by Thelma Birrell (2460), "Marakiri", 8 Lefoes Road, Bli Bli, Queensland 4560.

COX

Mrs. L. Mutimer (2981) is seeking information and descendants of Henry COX, born 1862 in Buckinghamshire, England and his wife Elizabeth Ann (nee TREVETT) born 1866, Dorset, England. They are believed to have arrived in Victoria between 1885 and 1895 and they lived at Brighton, Victoria. Contact Mrs. Mutimer at 9 East Court, Lalor, Victoria 3075.

COX

Information is sought on the family of William Henry COX and Alma (nee JOHNSON) who married at Black River, Northwest Tasmania on 4th September 1897. A daughter, Melvie Susannah Mary was born at Sheffield on 18 November 1899. Any further information appreciated by Ray Bassett (64), 24 Thistle Street, Launceston, Tasmania 7250.

ELLIOTT

Looking for descendants of Olive ELLIOTT, her married name is unknown. Olive had two children, Keith and Wendy, who are living somewhere in Australia. Olive also had two brothers, Charles and Claude, who went to Canada. Her father's name is Charles B. ELLIOTT. Mrs. C. K. Bluhm (1570) would like to hear from family members. Please write to 5 Nankoor Crescent, Howrah, Tasmania 7018.

EY/SEEGER/VOLLPRECHT

Johann Ferdinand EY (1814-1874) Mine Captain in South Australia at Burra, Kadina etc. and remained in SA, although at least one VOLLPRECHT grandson settled in Tasmania. Ferdinand EY's children were:- Johannah Henrietta (Anna) SEEGER, Wallaroo, SA; J. Wilhelm Ferdinand (William) EY, Wilmington/Melrose SA and WA; Julius Ferdinand (Julius) EY, Kadina SA; Wilhelmina Elvira (Minna) VOLLPRECHT, Yatala, SA; Carl Ludwig Theodor/Theodore Carl Louis (Theodor) EY, Gawler, SA. Descendants and information for publication sought. Write to Jill Statton OAM (1922), 199 Seacombe Road, South Brighton, SA 5048.

FAULKNER

William FAULKNER, born 1854? in England, the son of James and Sarah Anne (Nee Sheppard) FAULKNER. James died in 1902 at Franklin. Mrs Margaret Walker (1890) would like to know where he was buried and what became of William and Sarah Anne. Contact Margaret at 7 Carr Street, Kings Meadows, Tasmania 7249.

FOSTER

Mrs. M. Stone (2773) is seeking descendants of William FOSTER, born 16 July 1858, Longford to Richard and Bridget FOSTER. Possibly married Emma Annie WEBB, April 1886 at Christ Church, Longford. Contact Mrs. Stone at 9/19 Victoria Parade, Devonport, Tasmania 7310.

FREEMAN/PRINCE/BOWYER/HOWARD

James FREEMAN born circa 1802, Eltham, Kent, was transported to VDL per Bengal Merchant in 1828. He married Mary BOWYER at Hobart Town in 1833. Their first seven children were given the surname FREEMAN: Sarah Anne (1834 married James Edward Howard), James William (1835, married Mary Henderson); Mary Elizabeth (1837, married J. Henry Fredericks, 2. John Stevenson); Frances Elizabeth (1841, married Thomas Charles

Jones); William John (1843); George Alfred (1846, married Mary Ann Howard); Thomas Edmund (1849-1850). James and Mary then changed their surname to PRINCE and had children : Annie Euphemia (1851, married James Fredericks); Emily (1853-1853) and Henry James (1858-1858). James died 1860 and Mary in 1871. Some of the children retained the name FREEMAN in adulthood and some took PRINCE. Any further information on this family greatly appreciated by Ms Julie Stevens (3017), 33 Davidson Street, Traralgon, Victoria 3844.

HARDING/MARTIN

Samuel HARDING, stonemason, born Manchester England, circa 1764, arrived Tasmania circa 1806 with daughter Sarah, born 1789. Did other family come with them? Sarah married John JEFFS in 1819 at Launceston. He died 8 March 1820. She married William MARTIN on 15 December 1820 at Launceston. They had nine children; Maryann, the eldest, born 29 October 1821. Three children were born in Tasmania and six in Victoria where she lived for 57 years. Two were still living in 1881 when she died, aged 92. When did William die, as Sarah married again between 1835 and 1844 to Abraham LOCK and was widowed in 1870. Any information on this family would be appreciated by Mrs. Shirley Connaghan (2093), 29 Fairway Drive, Yallourn Heights, Victoria 3825.

HAY/HAZELWOOD

Robt. HAY (arrived on Calcutta) married Maria HAZELWOOD (daughter of Elizabeth HOPPER and Wiliam HAZELWOOD) born Norfolk Island. Any Descendants please contact Mrs. Betty Joyner, 206 A'Beckett Road, Narre Warren North, Victoria 3804.

HEDGER

Mrs. Dorothy Howard Alexander is compiling a history of her family; her grandmother was Amy HEDGER, daughter of John Howard HEDGER of New Norfolk, Tasmania. She would be glad to hear the whereabouts of any other descendants. Contact Mrs. Alexander at PO Box 215, Young, New South Wales, 2594.

JORY

William Brown JORY, born 1839, was living at Wellington Road, Sand Hill, Launceston when he died 11 January 1902. He was at one time connected to Campbell's Pottery, Launceston, perhaps as an owner of a brick kiln. He also has a mail contract to the gold mines at Beaconsfield which ended in 1899. William's second wife was Catherine MELVILLE (1854-1945) and their children were: Ethel (1887-1984); Walter (1890-1959); Edward Henry (1893); Ada (1894-1992) and Eric Lewin (1899-1967). Any information on William JORY, especially details on place of birth, parents, his early life and marriage would be appreciated by Mrs. Jan Barker (1173), 23 Lyndon Road, Bonnet Hill, Tasmania 7053 or phone (002) 29 6679.

LIPSCOMBE

Henry, Jane and two children arrived in Hobart in 1838. Henry was the eldest of three nurserymen brothers. Daughter married Henry William LACEY, a carpenter. Cannot find Jane's origin, maiden name (Bowker?) or death (by 1856). Information and stories, outside of State Archives and books, is sought by Frank Farr, 5 Taroona Avenue, Mount Waverley, Victoria 3149.

MANNING/AUSTIN/BUTLER

James MANNING married Nellie (surname unknown). A.M.M. MANNING marriage unknown. Harry MANNING married Mary (surname unknown). Alice MANNING married Timothy Mahoney. Robert MANNING married Mabel Hadfield. Sarah MANNING married a Mr. Archer. Elizabeth MANNING married Albert BUTLER. Mary-Ann MANNING married a Mr. AUSTIN. Richard MANNING married Elvie (surname unknown). Maurice MANNING married Evelyn (surname unknown). Any information about these families would be greatly appreciated. Please contact Mrs. M. Cronin (2534), 2 Hamilton Street, Deer Park, Victoria 3023.

MATTHEW/CROSWELL

Frances Jemima CROSSWELL married Richard MATTHEWS, a watchmaker, at New Norfolk in 1884. Known children are: John Joseph, Richard David and Ilene Sarah Jane. Frances was my grandmother's (in New Zealand) aunt and corresponded with her early this century. I would like to make contact with any of Fanny's descendants. Mrs. Barbara Stirling, 17 Milner Court, Cranbourne, Victoria 3977.

MAURICE

Does anyone know anything about my great grandmother, Dora Louisa MAURICE. This lady was apparently born in 1861/2, supposedly in Hobart. She did, however, change facts on every document she filled out. She later gave her name as MORRIS. Her first name may, in fact, have been Isadora. She married William ROSIER at an unknown date and place. Her first child, Oscar, was born in Melbourne, at St. Kilda in 1884. There are no records in New South Wales of any MAURICES in Hobart, but of course she could have been born in any small town nearby. I have also been unable to locate her death records in Melbourne as I do not have an accurate date to go by. Does anyone know if there is a list of the surnames of people born on Cape Barren island? Were records kept of births and marriages there? Any information would be appreciated by G.M. Hooper, 7 Abbotsford Road, Katoomba, NSW 2780.

POINTON/WRIGHT

Mrs. Judy Scott (454) is seeking contact with descendants of Frederick POINTON who arrive in Tasmania in 1837 and married Louisa WRIGHT at Longford in 1845. Believed they lived in Deloraine area. Contact Judy at 22 Anderson Street, East Ballina, NSW 2478.

POOLE

Edwin Henry POOLE, born Maldon, Essex, on 25th October 1865, to Richard and Isabella (nee SCOTT). He is listed in the 1881 census for Essex but not the 1891. According to a family story he was sent or went to Australia under unpublicised circumstances and "never spoken of again". Any information would be appreciated by Thelma Grunnell (610B), 43 Salisbury Crescent, West Launceston, Tasmania 7250

REECE

Is anyone researching Eric REECE and family? If so, you may be able to identify Eric Reece in photograph of a Storey's Creek school group. If anyone can help, please contact Mr Volker Hahl, Storey's Creek, Tasmania 7213 phone (003) 85 2114.

SWANN

George SWANN (born 1829) married Sarah STREET at St. George's Church, Hobart on 5 October 1855. They had the following children: William Richard (1856); Martha Matilda (1858); Sarah Ann (1860); Alice Amelia (1860); Peggy Clara (1862); Alice Eva (1867); Ernest Wentworth (1869); George Ernest Goulding (1872); Albert Edward Bismarck (1873); Florence May (1876) and George John (1879). The only information David Street has about them is that witnesses at their wedding were Dorothy and Samuel SWANN. David has been unable to trace this family (apart from Sarah Ann, who married Caleb ELLEY, and moved to NSW to live) and would appreciate any help anyone could give him. David's address is 8 Dianne Grove, Vermont South, Victoria 3133.

TEMPLE

William TEMPLE, convict, arrived on the Countess Harcourt, 27 July 1821, and married Mary PHILLIPS who arrive on the Providence, 16 May 1826. They had four children: Jane (1828), Henry (1830), John (1832) and Frederick (1834). John, a mariner, married Mary Ann DONOVAN at Holy Trinity Church, Hobart on 19 July 1852. They had six children: Mary Ann (1855, Old Beach); Emily (1857, Harrington St., Hobart); William Henry (1859, Burnett St., North Hobart, married Mary Jane Foster); Frederick (1861, Old Beach); John (1863, Old Beach) and Jane (1865, Old Beach). Mrs. Nelly E. Oates (1920), Box 129 Spring Beach, Orford, Tasmania 7190 would appreciate any further information on the above.

THOMAS/HUNTER

Joseph THOMAS and Jane HUNTER married at Christchurch, Longford on 14 March 1853. They had five children: William, Mary Ann, Sarah, Joseph and Jane (who married Henry Ashur Roughley). Sarah married John LONGLEY at Latrobe on 21 November 1873 and they had five children. The fourth child, Martha Mary LONGLEY was born at Sherwood, 5 August 1880 and married Robert Scott in 1898. Descendants of any of the above are most welcome to contact Bob Scott (3036) 4 Bent Street, Nambucca Heads, New South Wales 2448.

THOMPSON/McAULEY

Sarah Adeline THOMPSON, born 1873 Castlemaine, married 1889 (in Victoria?) Joseph James Gwynne McAULEY. They are thought to have had thirteen children. Names advised so far are Lillian, James, Rita, Edelyn (Mrs. Wilson), Ruby, Iva, Clarice (Mrs. Daniels), Richard, Mary, Alma and Madeline. Some may have descendants still living in Tasmania. A lead needed please. Any assistance with information and particularly contact with descendants greatly appreciated by R.J. (Bob) Wellington (328), 46 Lindhill Ave., Lindisfarne, Tasmania 7015, phone (002) 43 7723.

WATTS/WILLIS

Matilda WATTS married Alexander James WILLIS IN Tasmania, circa 1849. Two children, Kate Mary (1850) and Arthur William (1851) were born at Hobart Town. Alexander James WILLIS, a widower remarried at Dunedin, New Zealand in 1871. Arthur William WILLIS finished his education at the Otago Boys High School, Dunedin from circa 1866. Any information about Matilda's birth, parents, where and when she died, etc. or ship and when Alexander and two children went to New Zealand (perhaps Otago) would be appreciated by Mrs. J.D. Wyllie, Claremont, No 2 RD, Timaru, New Zealand.

NEW MEMBERS' INTERESTS

- 3291 Lesley A. Hartley, RSD 219B Mt. Hicks Rd., Wynyard, Tas. 7325
FENNELL; SKEGGS
- 3292 Derek Michael Newton, 18 Pineleigh St., Penguin, Tas. 7316
OLD (Bristol, Eng); NEWTON (Hove, Eng); GOLDING (Iford,
Essex, Eng); NEWMAN (Iford, Essex, Eng); HARPER (? Eng)
- 3293 Kate Ramsay, 42 Oldham Avenue, New Town, Tas. 7008
- 3294 Cheryl Kathleen Ralph, Johnson Street, Sheffield, Tas. 7306
LYNCH (Gawler, Tas); STUBBS (Ulverstone, Tas); GOODSON
(Launceston, Tas); SMITH (New Zealand)
- 3295 Mr. Kim P.R. Simpson, 56 McPhee Street, Burnie, Tas. 7320
WILTSHIRE (Bedfordshire, Eng); MAWBY (Daylesford, Vic;
Sheffield/Tullah, Tas); SIMPSON (Circular Head/ Ulverstone, Tas);
FREEMAN (Marawah/Perth, Tas); WILSON (Circular Head, Tas);
McKINNON (Daylesford, Vic; Isle of Skye, Scot)
- 3296 Bob Jelley, PO Box 243, Burnie, Tasmania 7320
- 3297 Trudy Jelley, PO Box 243, Burnie, Tasmania 7320
- 3298 Bryan A. Curran, 7 Liston Cres. Hillcrest, Hamilton, NZ 2001
AMOS (Melrose and Heriot, Scot; Swanport, Tas); HOY (Melrose,
Scot); TAIT (Heriot and Lauder, Scot); CURRAN (Manchester,
Eng; Banbridge, Ire)
- 3299 Maria Gregory, 10 Belleview Avenue, Irymple, Victoria 3498
GREGORY (Hobart, Tas); OWEN (Launceston, Tas); LEE
(Launceston, Tas); SKARNES (Sand Hill, Tas); WASSELL
(Hobart, Tas)
- 3300 Dawn Vivien Brown, 4 Albany Court, Campbellfield, Vic. 3061
CROOKS (Hobart, Tas); TENNANT (Old Beach; Brighton);
HORNE (Hobart, Tas); BATT (Hobart, Tas); NUNN (Richmond;
Black Brush; Old Beach); GIBBONS (Hobart, Tas)
- 3301 David Edward Llewellyn, 11 Corinth St., Howrah, Tas. 7018
- 3302 Julie Laureen Llewellyn, 11 Corinth St., Howrah, Tas. 7018
- 3303 John Laurence Mitchell, "Melrose", Cranbrook, Tasmania 7190
SLORE; RAYNER; ROGERS; CHEW; CONNOLLY (All
Tasmanian families)
- 3304 Alan Wm. John Fletcher, 115 Clarence St., Bellerive, Tas. 7018
QUESTED, HOGBEN; KEELER; CARPENTER (All Kent, Eng,
families)

- 3305 Diana Margaret Fletcher 115 Clarence St., Bellerive, Tas. 7018
QUESTED, HOGBEN; KEELER; CARPENTER (All Kent, Eng. families)
- 3306 Sandra Champion, 174 Mount Rumney Rd., Mt. Rumney, Tas. 7170
CHAMPION
- 3307 William Christopher Gordon, PO Box 434, Glenorchy, Tas. 7010
- 3308 Alanna G. Hunter, 30 Tabors Rd., Nierinna, Margate, Tas. 7054
COLE; STRETTON; MUNDAY; HOOK
- 3309 Wilma Elyn King, 19 Tabors Rd., Margate, Tasmania 7054
CINNAMON; EDWARDS; SIZER; DUNN
- 3310 Margaret Nellie Clark, 8 Manresa Court, Sandy Bay, Tas. 7005
- 3311 Yvonne Clare Reid, 6/14 A Lowelly Rd., Lindisfarne, Tas. 7015
REID (Paisley?, Scot)
- 3312 Mardi P. Eaton, 9 Melaleuca Dr., Blackmans Bay, Tas. 7052
CRANE (Longley, Tas); KNOP (Lower Longley, Tas); TOMKEIGH
(Lower Longley, Tas); HACKER (Shoreham, Sussex, Eng);
BACON (Boston, Lincolnshire, Eng); COX (Heckington,
Lincolnshire, Eng)
- 3313 Philip John Nichols, 97 Fitzgerald Rd., Cambridge, Tas. 7170
NICHOLS (Tas; Eng); FORTNAM (Eng)
- 3314 Betty McMeekin, 38 Lewis Ave., Seven Mile Beach, Tas. 7170
GRIERSON (Alloa, Scot); ROBERTS (Launceston, Tas);
WARREN/WARRON (NSW)
- 3315 Andrea M. Lawrie, 38 Lewis Ave., Seven Mile Beach, Tas. 7170
GRIERSON (Alloa; Scot); ROBERTS (Launceston, Tas);
WARREN/WARRON (NSW)
- 3316 Anthony D. Buckland, 163 Albion Heights Dr., Albion, Tas. 7050
BUCKLAND (Tas; Devon; Dean of Westminster; Box Hill, Vic);
ARNOLD (Rugby, Eng)
- 3317 Ross Phillip Darvell, 12 Delange Place, Claremont, Tas. 7011
DARVELL; GOODING
- 3318 Louise Jane Darvell, 12 Delange Place, Claremont, Tas. 7011
- 3319 Cheryl Ann Clark, 2 Sunhaven Court, Midway Point, Tas. 7171
CLARK (possibly South Arm, Tas); FAZACKERLY (Dunally,
Tas); BRYANT (Hamilton, Tas); DALY (Hamilton, Tas); OXLEY
(Dover?, Tas); CHARLTON (?, Tas)
- 3320 Maureen Austin, 3 St. Helens Road, Hawthorn East, Vic. 3123
GANGELL; CLARK (VDL); RAYNER (Middlesex); HOLMES;
SHEA; PILCHER

- 3321 T. A. Larkins, 3 St. Helens Road, Hawthorn East, Vic. 3123
GANGELL; CLARK (VDL); RAYNOR (Middlesex); HOLMES;
SHEA; PILCHER
- 3322 Garth St. Clair Smith, 119 Emmett St., Smithton, Tas. 7330
WITHNALL (Stanley & Hobart, Tas; Baswich, Stafford, Eng);
BEAZELY (Hobart); SPURWAY SMITH (Campbelltown area,
Tas); FLOOD (Cleveland, Tas; Dublin, Ire)
- 3323 Karen Lee Shackcloth, 119 Emmett St., Smithton, Tas. 7330
- 3324 Mark Steven Hayes, PO Box 239 Huonville, Tasmania 7109
TOWNSEND; GILL; PARKER (all Tasmanian families)
- 3325 Malcolm John Turnbull, 51 Gilies St., Fairfield, Vic. 3078
BULMAN (Waverley, Launceston & Scottsdale, Tas); SHARP(E)
(Geeveston, Tas); TURNBULL (Sheffield/Ulverstone District, Tas)
- 3326 Keiran Scott, 87 Warrewee Rd., Balmarring, Victoria 3926
SHINNICK (Tas; Co. Cork, Ire); LUCAS (Co. Cork, Ire); STEELE
(Western District, Vic); DIXON (Norfolk, Eng); BARRY (Chewton,
Vic)
- 3327 Robert Lewis Lindley, 7 Delma St., Bentleigh East, Vic. 3165
LYALL (Newington, Surrey, Eng); LINDLEY (Eng); O'MEARA
(Tipperary, Ire); STILES (Kent, Eng); LEWIS (Greenwich, Eng);
NUTTALL (Manchester, Eng)
- 3328 Janice Margaret Cox, 10 Frederick Place, Devonport, Tas. 7310
O'HALLORAN (Clare, Ire); MARTIN (Galway, Ire); THORP
(Eng); MCCARTHY (Ire)
- 3329 Paul Bathurst Edwards, 3 Hugh St., Hawley Beach, Tas. 7307
EDWARDS; THOMPSON; ARCHER; SORELL; HORTLE;
LUCAS
- 3330 Edith A. Brock, 68 Forbes St., Devonport, Tasmania 7310
LOWE (Cheadle, Staffordshire, Eng); BROCK (Aberdeen, Scot)
- 3331 Colleen Esma Addison, 7 Olive Court, Devonport, Tas. 7310
PICKETT (Mole Creek/Chudleigh, Tas); CUBIT (Mole Creek);
McKENZIE (Hobart); NEEDHAM (Hobart)
- 3332 Jenny Grandfield, c/- Post Office, Forth, Tasmania 7310
MARQUIS (Tas; Argyllshire, Scot); GRANDFIELD (Tas)
- 3333 Janet Grandfield, c/- Post Office, Forth, Tasmania 7310
MARQUIS (Tas; Argyllshire, Scot); GRANDFIELD (Tas)
- 3334 June Brown, 27 Surrey St., Devonport, Tasmania 7310
ROWATT (Scot); DUNCAN (New Monkland, Scot); McKINLEY
(Scot)

- 3335 Glenice Valerie Brown, 7 Don View Rd., Devonport, Tas. 7310
MARTIN (Forth); GRANGER (Handley, Eng); SMITH (Eurora, Vic); STEVEN; CRYOR (Eurora, Vic)
- 3336 Ronald P. Gray, Unit 18 "Karingal", Lovett St., Devonport, Tas. 7310
GRAY (London, Eng); HARVEY (London, Eng); FRENCH (Suffolk, Eng); RUMSEY (Suffolk, Eng); RUMSEY (Suffolk, Eng); EWINS (Cardiff, Wales); MELLON (Hull, Eng)
- 3337 Marcia Wisniewski, 10 Eady St., Glenorchy, Tasmania 7010
BLACKWELL (NSW: Lincoln, Eng); SIMS; SURVILLE
- 3338 Cecily Rita Cox, Apollo Bay Rd., Bruny Island, Tasmania 7150
COX (Bruny Island)
- 3339 Beryl Elaine Phillips, 29 Channel Highway, Tarooma, Tas. 7053
MARTIN (Southtown, Suffolk, Eng); TOMLINSON (Southtown, Suffolk, Eng); LEAKE (Cambridge, Eng); WILES (Cambridge, Eng); SMYTH (Dublin, Ire); HARROP (Lancashire, Eng)
- 3340 Judith A. Palmer, 29 Dixon Point Road, Sandford, Tas. 7020
- 3341 Donald E. Palmer, 29 Dixon Point Road, Sandford, Tas. 7020
- 3342 Dulcie Gray, 20 Highfield Street, Moonah, Tasmania 7009
- 3343 Colin Gray, 20 Highfield Street, Moonah, Tasmania 7009
- 3344 Maxwell R. Banks, 38 View Street, Sandy Bay, Tasmania 7005
CLOWETH (Lancs. Eng)
- 3345 Joanne Sapwell, 73 Main Road, Sorell, Tasmania 7172
JENNINGS (Swansea); LUMSDEN (Nile); BOMFORD; DORAN (Swansea; Hobart); SHERSTON (Hobart); McDOWALL (Circular Head)
- 3346 Sharon Lee Bowden, 5 Clyde Court, Lenah Valley, Tasmania 7008
HARRIS (Romsey, Hampshire, Eng); RYAN (Wexford, Ire); BRENNAN (Athlone, Ire); BAILLIE (Tas)
- 3347 Elliott S. Bowden, 5 Clyde Court, Lenah Valley, Tasmania 7008
HARRIS (Romsey, Hampshire, Eng); RYAN (Wexford, Ire); BRENNAN (Athlone, Ire); BAILLIE (Tas)
- 3348 Sally-Anne Newlands, GPO Box 538, Hobart, Tasmania 7001
- 3349 James A. Potter, Box 643, Primrose Sands, Tasmania 7173
HALL; AINSWORTH; BELLETTE (London); POTTER; DAVIS (Eng); THOMAS (Stoke on Trent)
- 3350 Majorie E. Potter, Box 643, Primrose Sands, Tasmania 7173
HALL; AINSWORTH; BELLETTE (London); POTTER; DAVIS (Eng); THOMAS (Stoke on Trent)

- 3351 Elizabeth Findlayson, 523 Main Road, Montrose, Tasmania 7010
ISLES (Bath; Tas); KNIGHT (Lowlands, Scot); PRESNELL (Tas)
- 3352 Muriel Holland, 523 Main Road, Montrose, Tasmania 7010
- 3353 Fonda Arnold, 3 Diosma Street, Rokeby, Tasmania 7019
Clarence Plains District
- 3354 Peter H. McFie, 1 George Street, Dulcot, Tasmania 7025
Richmond/Cambridge/Campaina District; Point Puer descendants;
MACFIE (Scot)
- 3355 Allison J. Smith, 11/219 Cambridge Road, Warrane, Tas. 7018
- 3356 Inga Mary Shelverton, 46 York Street, Bellerive, Tasmania 7018
SHELVERTON (Eng); HARTIL (Eng); GLEESON (County Kerry, Ire)
- 3357 Carmel Shelverton, 46 York Street, Bellerive, Tasmania 7018
SHELVERTON (Eng); HARTIL (Eng); GLEESON (County Kerry, Ire)
- 3358 Michelle Freeman, 15 Saunders Crescent, Traralgon, Vic. 3844
AHERNE (Port Sorell/Port Frederick, Tas) FREEMAN
(Queenstown, Tas); BATESON (Foxton, Cambridge, Eng);
PENDLEBURY (Manchester, Lancashire, Eng); KENNEDY
(Londonderry, Ire)
- 3359 Eznith Noelene Sweetman, 4 McGrath Street, U. Burnie, Tas. 7320
- 3360 Lila Muriel Muir, Green Point, Marrawah, Tasmania 7330
SCOLYER (Cornwall, Eng); MOTTON (Cornwall, Eng); MURFET
(Bishopsbourne, Tas); HAZELWOOD (Bishopsbourne, Tas);
STEPHENS (Bishopsbourne, Tas)
- 3361 Elizabeth M. A. Wilson, 4 Sutherland Rd., Upper Beaconsfield, Vic. 3808
PERGER
- 3362 Betty Fay Pilgrim, 9 Sloane Street, Battery Point, Tasmania 7004
PILGRIM (Cornwall, Eng); TARGETT (Shepton Mallet, Somerset);
THORNBURY (Gloucestershire, Eng)
- 3363 Kenneth Este, 5/10 Rose Lane, South Launceston, Tasmania 7249
JOHNSON (Ire?, Launceston, Tas); BURNSIDE (Scot?;
Launceston, Tas); HERRON (Eng?; Beaconsfield, Tas)
- 3364 Patricia M. Campbell, 21 St. Leonards Road, Launceston, Tas. 7250
JONES (Oatlands/Tunbridge, Tas); CAMPBELL (Scottsdale, Tas)
- 3365 Margaret W. Carmie, RSD 471 Polters Road, Kayena, Tas. 7270
CUNNINGHAM (Ayrshire); (McMILLAM (Ayrshire); SENIOR
(Leeds, Eng)
- 3366 Harry O.C. Gillett, 3 Old Punt Road, Perth, Tasmania 7300
PARRAMORE (Wetmore, Ross); OAKDEN

- 3367 Sylvia Gray, Gardens Road, Binalong Bay, Tasmania 7216
COMING (North Yorkshire, Eng)
- 3368 Ursula Monica Hey, 81 Abels Hill Road, St. Leonards, Tas. 7250
- 3369 Sandra Joy Phillips, 2 Sheppy Street, Launceston, Tasmania 7250
THOW (Scot); PATTERSON (Scot); PIME (Ire); WISE (Eng; Aust); THOMPSON? (Germany); BARRETT (Eng)
- 3370 Eric Anthony Ralph, 25 Campbell Street, Newstead, Tasmania 7250
BURROWS (Bodmin, Cornwall; Tas); DUSHEEN (Launceston/Hadspen, Tas)
- 3371 Isabel C. McCafferty, RSD 807 Main Road, Kelso, Tasmania 7270
CAMERON (Rosshire, Eng); FRAZER (Inverness, Scot); TILLEY (Hobart, Tas); PERHAM (Launceston, Tas); ABEL (Hobart, Tas); McCAFFERTY (Launceston, Tas)
- 3372 Reginald R. McCafferty RSD 807 Main Rd, Kelso, Tasmania 7270
GUY (Launceston, Tas); POLLOCK (Launceston, Tas); SQUIRES (Birrilee); BRODIE (Edinburgh, Scot)
- 3373 Janette Anne Welsh, 16 Julie Crescent, Newnham, Tasmania 7248
BARRETT (Norfolk, Eng; Longford, Tas); WISE (Kent, Eng; Longford, Tas); WELSH (Eng; Tas); HOGAN (Tas); PINE (Ire; Carrick, Tas); DALTON (Dartford, Eng)
- 3374 Eric J. Ind, 4 Hazelwood Parade, Ravenswood, Tasmania 7250
IND (Stoke on Trent/Burton, Eng)
- 3375 Robyn L. Ind, 4 Hazelwood Parade, Ravenswood, Tasmania 7250
IND (Stoke on Trent/Burton, Eng)
- 3376 Bruce L. Allen, 24 Amy Road, Launceston, Tasmania 7250
ALLEN (Norfolk, Eng); BRUMBY (Eng; India)
- 3377 Aileen Avis Armstrong, 2 Walkers Ave, Newnham, Tasmania 7248
NICHOLLE, (Bath, Somerset); SHAW (Lancaster, Eng)
- 3378 Henry J. M. Penhall, 16 Hume Street, Newnham, Tasmania 7248
SEMMENS (Crowan/St. Austell, Cornwall; Adelaide, SA); PENHALL (Walleroo/Adelaide/Kadina, SA) ROGERS (Kooringa, Mount Burra, SA)
- 3379 Robyn Annette Arthur, 71 Warring St, Ravenswood, Tasmania 7250
CLARK (Kent, Eng); ABBLITT (Kent, Eng); HUDSON (Hockham, Norfolk, Eng); RICHES (Hockham, Norfolk, Eng); MILLER (Tas); FROST (Birrilee, Tas)
- 3380 Faye Beverly Gurr, 22/4 Blyth Street, Ravenswood, Tasmania 7250
BAILEY (UK; Tas); WORNER (UK; Tas)
- 3381 Angela M Williams, 17 Rossmoyne Street, Norwood, Tas. 7250
- 3382 Vonda M. Pritchard, 27 Parua Road, Newnham, Tasmania 7248
SEADON (Overtonbank, Leek, Staffordshire, Eng)